

MAIA Intelligence

Strategies for
On Demand MIS



The
world is changing
and
so must you

www.maia-intelligence.com

A time for challenge

This is a time for challenge for MIS Managers. Today's on going demands from management, regulatory bodies, as well as constant pressure to meet time dead lines. Markets are undergoing a complex transition from incumbent to competitive and are moving towards increasingly global operations.

To do this MIS Managers will have to look beyond standard practices for new MIS strategies that promise result at affordable costs. But what MIS strategies are right for your company? How can you thrive amidst disparate data sources? How can you balance data security and data authenticity across enterprise? What are the best solutions for facilitating your strategies? To answer these questions, MIS Managers can benefit from strategic insights and practical advice from one of the best MIS reporting leaders within the industry.



What MAIA Intelligence Offers?



We recommend the use of 1KEY MIS Reporting Tool in below five mentioned strategies to get on demand MIS.

Recommended strategy No 1:

Take in account the reporting and analysis needs of all business users (Executives) with the cXo and managers. Data garnered should be appropriate for all the business users with correct and precise insights whenever needed.

What 1KEY Offers

1KEY delivers a comprehensive and flexible MIS platform that integrates and supports all leading databases and applications. 1KEY will ensure a 360 - degree MIS view by recognizing different needs segment wise giving precise insights.

Recommended Strategy No 2:

Educate business users to rely on single source of truthful data. Forbid use of spreadsheets in meetings and presentations. Wide spread use of spreadsheets across the enterprise can create multiple versions of truthful data.

What 1KEY Offers

1KEY analytic functionalities with visually stunning reports will help business user's move away from spreadsheets and help MIS Managers generate report by connecting information among disparate applications.

Recommended Strategy No 3:

Establish data quality competency centre. Establish the system with the data which has an audit trail with referential integrity and data integrity in place. Garbage In Garbage Out

What 1KEY Offers

1KEY MIS reporting solution offers solutions to effectively manage data centric applications. MIS managers can handle data complexities and optimize it for on demand preventive and predictive analysis data which has complete referential integrity

Recommended Strategy No 4:

Unlock your enterprise from application for reporting needs. etc. are best for recording your generation of intelligent insight and analysis applications can all together new meaningful analyzing data.

What 1KEY Offers

Automatic and manual data intuitive rule builder. Data architecture design is aided by the 1KEY application. The data then be drawn into as analytical analysis. 1KEY MIS addresses for vertical markets such as Government, Education and (Aviation, Fleet Management and Utilities) and Manufacturing (Process and Discrete). 1KEY has a rich repository of metrics, reports and alerts as predefined content across various industry verticals

The future will look
different
When you choose
the right partner
for MIS -
MAIA Intelligence

the transaction based
Your existing SCM, ERP, CRM
transactions but not for
reports. Specialized reporting
expose your business users to
way of viewing data and

cleansing is possible with an
analysis and data warehouse
the data profiling functionality in
from the data warehouse can
reports for multi-dimensional
the needs of enterprise analytics
Service (Financial,
Health Care), Asset intensive

Recommended Strategy No 5:

Get the analysis of your data done in house. Do not outsource the reporting and analysis to a third party. It should be a part of daily use and not just a quarterly or yearly report submitted by a third party. Develop and implement the reporting and analysis system in house and roll out for all the business users of your enterprise.

What 1KEY Offers

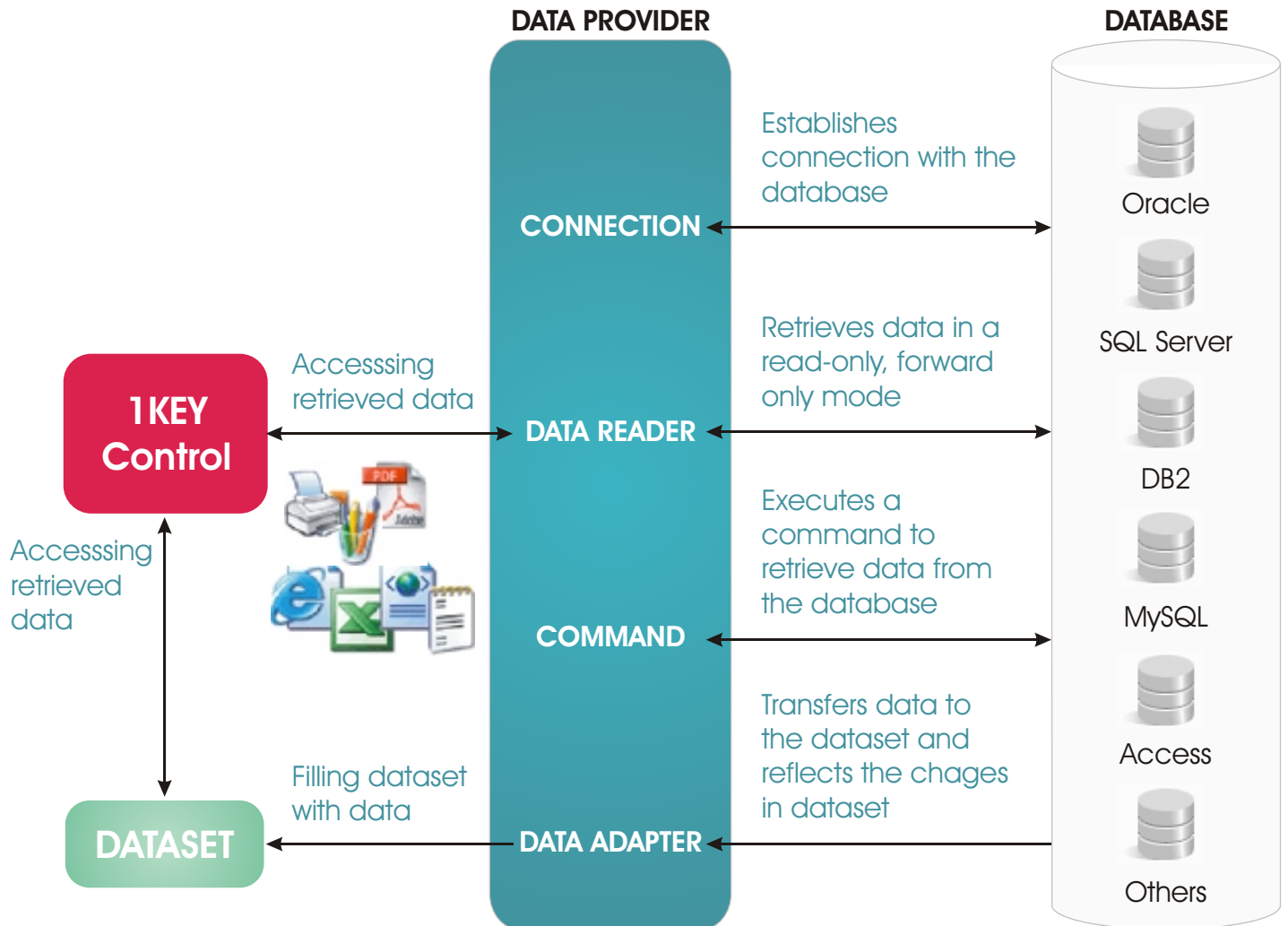
1KEY MIS Reporting tool generated within the manipulated by third party. save multiple copies of a data at different points in time, associated with changes to snapshot-type spreadsheets to

1KEY continues to offer MIS help their organizations and operations. It's time to get on the preferably in the driver's seat. crunching. You can help reduce can ensure the systems are dependent on one person or human. Most important, you can make sure 1KEY MIS Reporting is answering the right questions. Get in touch with us now.

Are you ready?.....
Experience the
deepest insights
of your business
using 1KEY

guarantees truth as MIS is
organization and cannot be
1KEY eliminates the need to
spreadsheet to reflect snapshot
and overcomes the challenges
historical data that then cause the
be incorrect.

Managers a big opportunity to
clients better analyse their
1KEY MIS Reporting bandwagon
It's not just about number
the risk of reporting errors. You
effective and efficient, and not too



Introducing the 1KEY View, for the business applications user to create visually stunning reports with incredible features/flexibility. It has standard two-dimensional tables to runtime grouping and column customization; from master/detail relationships, to card views; from XP themes to unbound mode. 1KEY View has been engineered to fully address your business intelligence reporting requirements and help you compete and win in the marketplace - without compromise or hassles.

Here is a brief overview of the capabilities available to you once you begin using the 1KEY view:

Employee		Details	
Employeecode	Employee name	Basic	
Designation	Department	Pf	
A00001	ANURADHA J. SHAH		12900
DIRECTOR	CHEMBUR HO		780
A00002	ASHOK GIRDHARLAL SH...		11400
PLANT INCHARGE	KANJUR WORKS	Supplier Name: Norske Meienier	780
A00004	ANIL DAS	Supplier Name: Norske Meienier	2025
CASUAL LABOUR	VASHI WORKS	Contactname: Beate Vileid	243
A00005	ASHARAM DUBEY	Contacttitle: Marketing Man...	2025
CASUAL LABOUR	VASHI WORKS	Address: Hatlevegen 5	243
		City: Sandvika	
		Postalcode: 1320	
		Country: Norway	
		Phone: (0)2-953010	
		Fax:	
		Homepage:	

1Key Viewer - Card View

Four Built-In Data Views

The 1KEY View has expandable cards, a table layout, nested band columns and multi-row column headers and cells. As you can imagine, each view includes numerous data representation and editing features such as end-user grouping, sorting, filtering, data summary calculations, integrated cell editors, etc.

Party	State	Agent			
ADB AMRAPALI DRESSES	MP	INDRE ASSOCIATES			
Order Booked	Order Sent	Order Cancel	Order Cutting	Order Ready	Party Address
Drag a column header here to group by that column					
Ord No.	Date	Sleev	Design	Group	
000803	06-04-2005	H	BE-301 H	FZ-POSTER SE	
000803	06-04-2005	H	BE-302 H	FZ-POSTER SE	
000803	06-04-2005	H	BE-303 H	FZ-POSTER SE	
000803	06-04-2005	H	BE-304 H	FZ-POSTER SE	
ADBM ADARSHA DRESS CIRCLE	KAR				
ADSN A.D.S. & CO.	TN	S. R. BABU RAO			
ADT A K A S H D E E P	KER	PRAFUL GHELANI			
AFH AKASH FASHION WORLD	TN				
AOC ANU GARMENT	TN				

Create Your Own Custom Views

The 1KEY View allows you to easily create a new view based on any existing view via specially designed registration routines that allow you to use your custom view in the same manner as our built-in views. Not a single design-time or runtime feature will be sacrificed if you create a view to solve a specific business requirement.

Sales Person	Order Year	Region	Country	City	Job Title
Steven Buchanan	1996	UK	London		Sales Manager
Drag a column header here to group by that column					
Quarterly Sales Details					
Product Name	Order Date	Customer	Quarter		
Alice Mutton	22/07/1997	Save-a-lot Markets			\$0.00
Alice Mutton	22/10/1997	Save-a-lot Mar		Add2 MAIN ROAD, RAJARAMPUR	00
Boston Crab Meat	13/03/1997	Pericles Comis		Name: JACK ADARSHA C...	70
Boston Crab Meat	22/07/1997	Save-a-lot Mar		Address: 1887/A, E' WARD...	00
				Add2: MAIN ROAD, RAJA	40
Michael Suyana	1996	UK		Add3:	eser
Margaret Peacock	1996	WA	UK	City: KOLHAPUR	eser
Janet Levering	1996	WA	UK	Zip: 416 006	eser
				Phone: 2520607 OFF.252	
				Fax:	
				Contact:	
				S_Tax: 416008-S-2030	
				Trans: SAMARTH TRANSP	
				Banker:	
				Tin_No:	

1Key Viewer - Quarterly Sales Summary

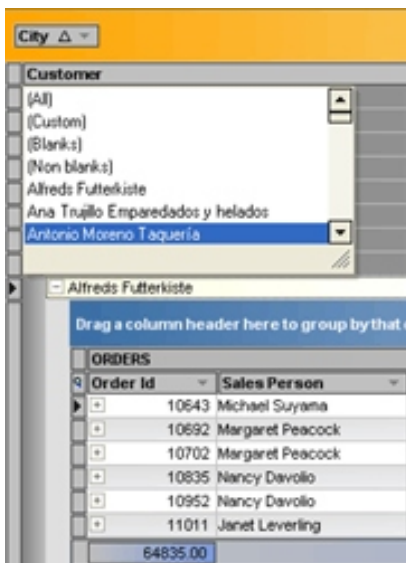
Different Views for Parent and Child Records.

The 1KEY View naturally allows you to represent data at each Parent-Child level by its own view.

+ ACP	ANJILLAN CLOTH MART	KER
+ ADB	AMRAPALI DRESSES	MP
+ ADBM	ADARSHA DRESS CIRCLE	KAR
+ ADSN	A.D.S. & CO.	TN
+ ADT	A K A S H D E E P	KER
+ AFH	AKASH FASHION WORLD	TN
+ AGC	ANU GARMENT	TN
+ AHM	ASHOK CLOTH HOUSE	MAH
+ AKH	AKSHARA SILKS & SAREES	TN
+ AKRA	ARRCOT KAMAL READYMADES	TN
+ ALM	ALLEPY READYMADES	KER

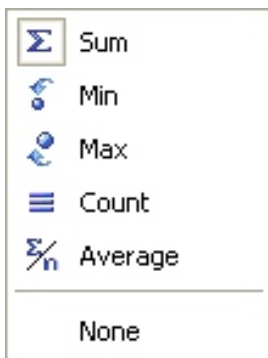
Different Detail Views for Different Master Rows View Repository

The 1KEY view repository is especially useful if you need to provide different views for different master rows. You can also create multiple views and allow end users to switch between different data representation formats at runtime.



Parent-Child Layout without Feature Sacrifice

1KEY Views are separate objects fully-functional in regards to data representation and editing. Thus, all the features like data editing, grouping, sorting, filtering, summaries, preview sections are available regardless of whether the view is used to represent a parent or child.



Detail View Zoom Option

When a 1KEY that displays Parent-Child relationships includes large detail sections, it becomes rather difficult to manage, view and manipulate the contents of the grid control. With the 1KEY Detail View Zoom option, users can simply press a button and hide all master levels and focus on the detail section in its entirety. A second button click will return the 1KEY View to its original layout. Of course, all views at any nesting level can be zoomed.

+ ARS	A.R.R.S.SILKS	TN	MAHADEVAN
+ ART	ABHIRAMI READYMADE & MATCHIN	TN	PAREKH AGE
Order Booked Order Sent Order Cancel Order Pack Order Cutting Order			
Drag a column header here to group by that column			
Q	Ord No.	Date	Sleev Design
+ 00021.	15-10-2005	F	EC-151 F
+ 00021.	15-10-2005	H	EC-151 H
+ 00021.	15-10-2005	F	EC-152 F
+ 00021.	15-10-2005	H	EC-152 H
+ 00021.	15-10-2005	F	EC-153 F
+ 00021.	15-10-2005	H	EC-153 H
+ 00021.	15-10-2005	F	EC-154 F

Alternate Methods to Switch between Detail Views

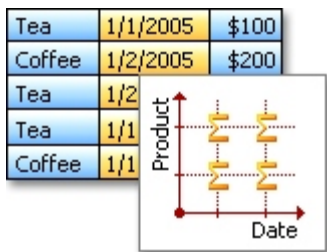
The 1KEY View allows you to switch between details using either tabs. This allows users to handle multiple details without frustration. They have direct access to any detail right under the master row and don't ever have to scroll to reach the second or third detail.

When it comes to data mining and multi-dimensional analysis, an advanced and feature complete pivot table control provides business users unrivaled insights into daily operations. Using the pivot capabilities of products like spread sheets meant introducing "out-of-process" solutions within managed applications until 1KEY for .Net was released.

The 1KEY Cube was engineered from the ground-up to blow away the limitations posed not just by these out-of-process solutions, but to radically improve the way in which data-centric applications deliver information to end-users. With its powerful data architecture, the 1KEY Cube is able to slice and dice information efficiently and provide customers with an extremely intuitive end-user experience. It delivers numerous layout customization options with total end-user control over each individual on-screen report. Regardless of the perspective, data can be rendered to answer business questions - and best of all - it allows you to focus on business rules rather than creating dozens and dozens of reports.

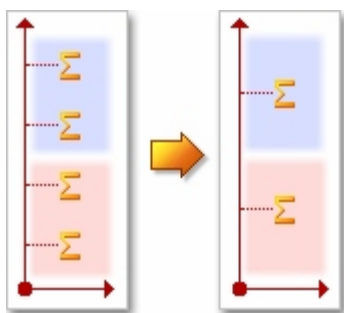
At MAIA Intelligence we know that your time is valuable and our goal has always been to deliver products that address your business needs, increase your productivity and offer the "wow" factor that helps you keep end users happy for years to come. 1KEY Cube demonstrates our efforts to deliver & users, software which can have endless set of option to analyse the data in efficient manner.

The 1KEY Cube is a comprehensive data analysis, data mining, and visual reporting solution. It was engineered from the ground up to provide a unique bridge between on-screen forms and printed reports. With it, your users can break down raw data in any manner they require using easy-to-understand Windows commands and instantly render the desired output to a printer. By incorporating the 1KEY Cube in your application, you can deliver an almost endless array of reports - both on-screen and in printed form - without hassles.



Quickly Display Table Data into Fully Customizable Visual Reports

1KEY Cube allows end users to slice and dice data in a manner similar to that found in MS Excel®. It has the power to convert hard to read and difficult to dissect dataset information into compact and summarized visual reports - making your data far more usable and more effective at addressing your customer's real-time business analysis needs. 1KEY Cube users can easily change a report's layout visually in order to examine data from different/multiple perspectives. The benefits of this are two-fold - 1. As an MIS Manager, you never again have to foresee all possible report scenarios 2. You do not have to use complex reporting tool to generate intelligent reports.



Control the Level of Detail

By default, the row and column axes contain each unique value in the source column. With the 1KEY Cube, you can quickly simplify a report by merging values. For instance, you might have a report containing survey data in which the respondent's age represents an important characteristic. End-users may not want to browse through each and every unique age and instead want to see the ages of respondents in intervals such as 21-30, 31-40, etc. Instead of viewing sales by each unique date, they may want to view the sales for just the first few months. The axis can be customized in almost any fashion and the most common customizations need only a single property to be modified for its implementation!

Saloon	
2001	\$78,900.00
2002	\$5,174,085.00
2003	\$8,087,950.00
2004	\$16,849,850.00



Print and Render the 1KEY Cube with Ease

The 1KEY Cube is NOT just about on-screen data analysis. With it, you can export data to numerous formats and render its contents to paper just like a traditional WYSIWYG report.

1996		
Qtr 1	Qtr 2	
\$464.55	\$714.	1996
\$625.00	\$424.	\$1178.55
\$5,014.97	\$1,835.	\$1049.00
		\$6850.67

Arrange Values Hierarchically - See Raw or Summarized Data in a Single Report

Businesses have unique requirements and no two entities will analyze information in the same exact way. Your end-users may want to analyze sales for each product or each product category. They may want to view yearly data or see more detailed data by viewing the data for each month in a year. Using traditional reporting/database tools, you would often be forced to create a myriad of different reports to deliver the appropriate solution to your customers - but that's no longer the case with the 1KEY Cube. Since the visual control offers your end-users total runtime customization flexibility, not a single report layout needs to be modified to view data at different detail levels. You simply place fields at lower detail levels on the column or row area. Field values are automatically arranged into a tree structure with expandable parents. End-users are free to expand and collapse child groups to see more summarized or raw reports.

1994	
Beverages	Chai
	Chang
Beverages Average	
Beverages Sum	
Beverages Max	
	Grand Total
	\$1,422.
	\$2,732.
	\$1,038.
	\$4,154.
	\$1,444.
	\$12,176.10
	\$15,354.66
	\$1,720.67
	\$27,530.76
	\$3,692.65

Automatic and Manually Specified Totals

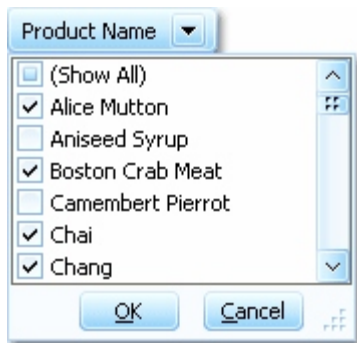
To improve the development experience, the 1KEY Cube ensures your ability to deliver superior capabilities with minimal coding. Among the many features available in the component library is its ability to display grand totals for each row and column automatically. On the rare occasion that the built-in summary computation engine does not address a specific business requirement, you can display any number of totals for any value group.

Points ...	
Chicago	Johnson
	Stevens
	Smith
Orlando	Watson
	Jackson
	James
	21
	14
	10
	13
	11
	8

Sort Data and Display Top Rows - Easily Access the Most Important Information

The 1KEY Cube automatically sorts row and column values so you can easily locate required data. Comprehensive data analysis, however, often requires a two-way approach to data navigation in that you may need to find data by a specific value or find a value by its data. To allow for the latter approach, the 1KEY Cube introduces a unique feature - sorting values by their corresponding grand totals. This means the product you'll see first is not the one which starts with an A or Z, but rather the one that has the most or least sales. This of course is just the beginning to more effective and efficient data analysis. You can also specify the number of top rows that are displayed. So you can view a specific number of best-

selling or worst-selling products for each year, month, customer, etc. You can concentrate on only the most important information and avoid being overload with a lot of surplus data.



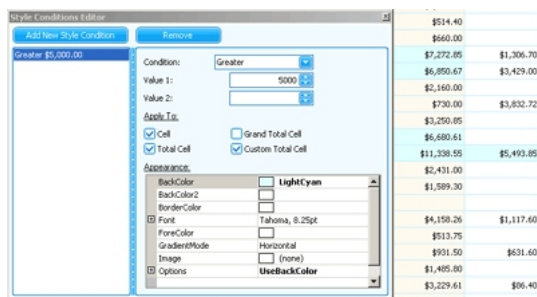
Filter Data - Filter Out the Values Used to Calculate Summaries on the Fly

As you've probably gathered, the 1KEY Cube is unrivaled in its feature set and capabilities for the .NET Framework. Our goal was to radically simplify runtime data analysis and provide end-users with superior customization options. You will find that with its built-in visual filtering option, your end-users can manipulate reports on the fly using an easy to understand and familiar visual metaphor.



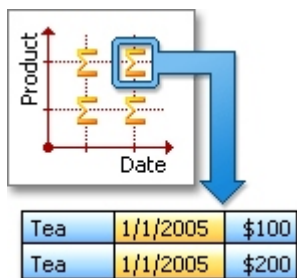
Hide unnecessary values in the axes.

Yet another mechanism that allows end-users to focus only on the most important data.



Filter the data against which calculations are based.

To allow your end-users manage this capability visually, the 1KEY Cube has a Filter Panel Region. This pane was specifically designed to contain fields that aren't currently used in the report, and when required, can be dropped onto the report to automatically alter the base data used in the calculations.



Drill Down - Take a Look at the Data Behind a Summary

The 1KEY Cube is designed to transform table data into a summarized report. At the same time, it allows you to do the reverse.

How can I earn more revenue? Get the decision within your data with 1KEY
Change Management? Get 1KEY as an enabler



You are doing a lot to improve
the way your company operates
where do you go from here
- Call MAIA Intelligence



MAIA Intelligence

Email: sales@maia-intelligence.com
www.maia-intelligence.com