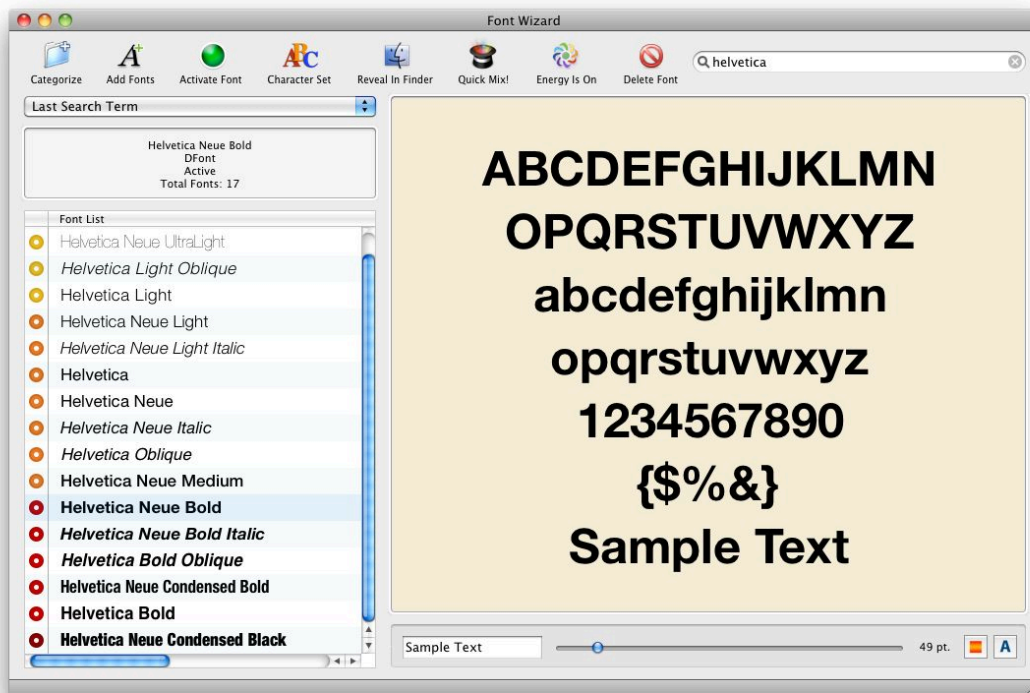




Veenix®

## Font Wizard 1.0



### Introduction

Font Wizard is a smart font manager for Macintosh that helps you find and view fonts and characters quickly. Font Wizard features a non-stick, fast-scrolling WYSIWYG font list, gorgeous repertoire and character set layouts, plus Veenix's powerful GlyphLogicEngine® technology which analyzes font characteristics and automatically organizes fonts by font energy-color as well as into 16 different standard font classifications: text fonts, sans serif fonts, serif fonts, picture, script and thematic fonts, monospaced fonts, fraction and expert fonts and more. Font Wizard also offers font activation and an innovative "Quick Mix Suggestions" feature, which suggests alternative or similar fonts for any font in your database. Font Wizard supports PostScript, TrueType, OpenType and Apple DFont formats and works with both installed and uninstalled fonts.

\*\*\*



### Setting Up Font Wizard and Adding Fonts to the Font Wizard Database

When you launch Font Wizard for the first time, a set-up window appears (shown above) from which you may elect to have Font Wizard automatically add the fonts located in your System Font Folders. If you want to add fonts on your own, you can select the appropriate button and follow the instructions below. Fonts located in your System Font Folders can easily be automatically added or removed from your database at any time by selecting the appropriate menu item under the "File" menu.

To manually add fonts, click on the "Add Fonts" icon button in the tool bar or select "Add Fonts..." from the "File Menu." You may select a folder or entire volume (hard drive) and Font Wizard will scan and analyze font files for inclusion in the database. Font Wizard performs many font validation and integrity tests, as well as font characteristic analysis. Fonts are automatically categorized into one or more optically-derivative categories as they are added to the database. You may further categorize and/or re-categorize your fonts as you see fit.

\*\*\*

### Activating Fonts

Active fonts are indicated in Font Wizard with a white dot in the center of the energy/type indicator in the font list. To activate an inactive font, simply select (highlight) the font and click on the "Activate Font" button in the toolbar at the top of the window. Fonts activated in Font Wizard stay active until you restart your computer. If you would like to permanently install a font, simply choose the font, select "Reveal Font In Finder" under the "Options" menu and then double click on the font in the Finder to install it in your System Folder.

\*\*\*

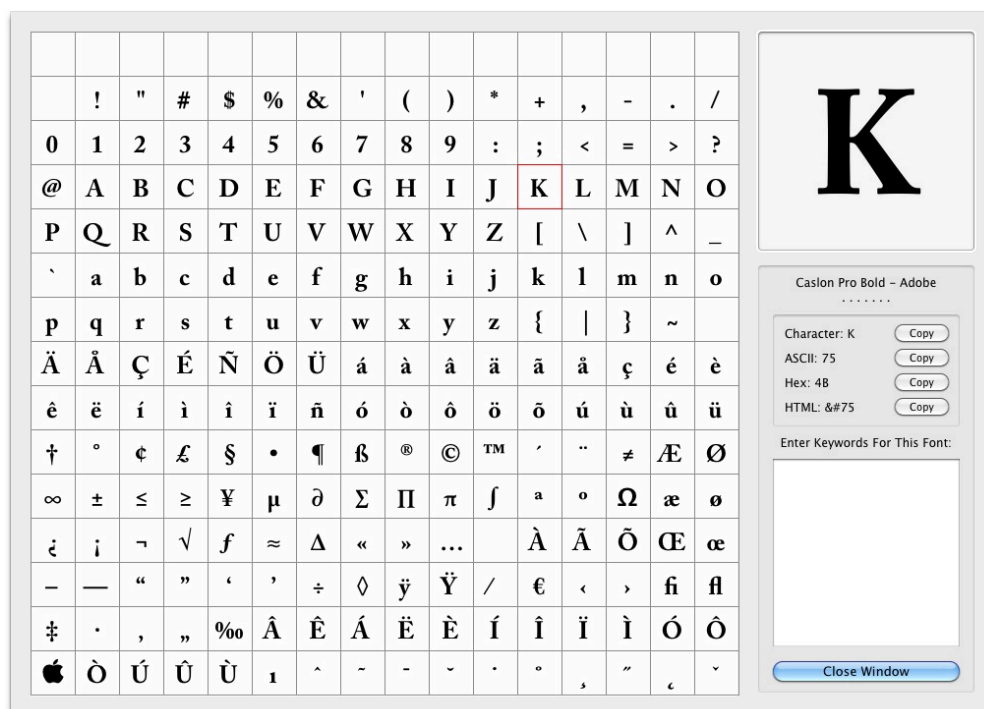
### Using the "Quick Mix Suggestions" Feature

"Quick Mix Suggestions" automatically suggests alternative or similar fonts based on the selected font and is a great way to explore font options and spur creativity! Simply select a font in your font list and select "Quick Mix Suggestions For Selected Font" under the Options menu. The GlyphLogicEngine scans your database and quickly selects a variety of fonts which may have similar characteristics.

\*\*\*

### Previewing Fonts

Previewing fonts in Font Wizard is easy; just **click** on a font in the font list to update the font repertoire. Enter your own custom text in the edit field box near the bottom of the main window. Change the font size using the slider to the right of the custom text edit box. Select a background color/text color using the buttons to the right of the text size slider.



### Showing Font Character Sets

To see the ASCII Character Set for a font, simply **double click** on a font in the font list or click the Character Set button in the toolbar. Within the Character Set window, click on a character to see a larger view. Copy the character or ASCII value, hex value or HTML value directly to the clipboard by clicking on the appropriate button. Enter keywords for the font by adding them to the text edit box in the right panel. (The search field in the main window searches keywords as well as font names.)

\*\*\*

### Font Energy-Color Sort vs. Alpha Font Name Sort

You can toggle between the Energy-Color Sort and the Alpha Font Name Sort via the Energy On!/Off button in the window toolbar or by selecting the option under the Options menu. You can reassign energy levels as you see fit.



**Lite Blue:** ultra condensed and thin fonts.

**Medium Blue:** ultra condensed and medium weight fonts.

**Dark Blue:** ultra condensed and heavier weight fonts.

**Lite Green:** condensed and thin fonts.

**Medium Green:** condensed and medium weight fonts.

**Dark Green:** condensed and heavier weight fonts.

**Yellow:** thin or light fonts of average width.

**Orange:** medium weight fonts of average width.

**Red:** bold or heavier weight fonts of average width.

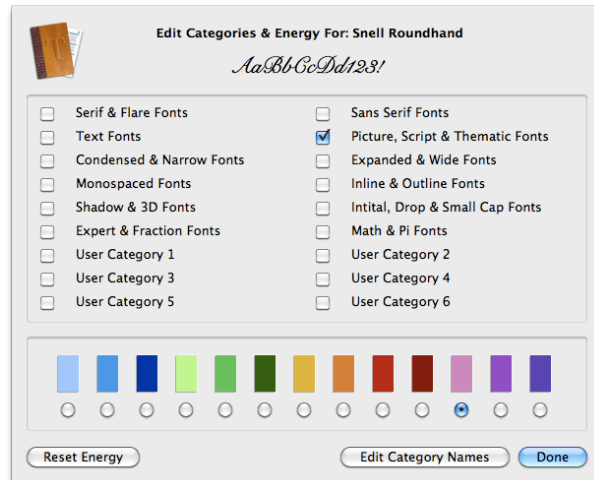
**Dark Red:** ultra heavy fonts of average width.

**Pink:** lighter weight fonts that have more mass distribution.

**Purple:** medium to heavy weight fonts that have more mass distribution.

**Deep Purple:** fonts that have extreme weight, or width or distribution.

\*\*\*



### Font Categorization and Energy Level Assignment

Font Wizard's built-in GlyphLogicEngine® analyzes fonts as they are added to the database, assigning energy levels and categorizing them into one or more of the following optically-derivative categories: Text Fonts, Serif and Flare Fonts, Sans Serif Font, Picture, Script & Thematic Fonts, Condensed & Narrow Fonts, Expanded & Wide Fonts, Monospaced Fonts, Inline & Outline Fonts, Shadow & 3D Fonts, Initial, Drop & Small Caps Fonts, Expert & Fraction Fonts, and Math & Pi Fonts. Font Wizard also automatically categorizes fonts based on their font type; TrueType (indicated with orange file icons in the list), PostScript (blue file icons), OpenType (yellow file icons) and Dfont format (green file icons.) GlyphLogicEngine results can be easily reassigned for any font using the Categorize feature.

### User Font Categories

You can easily categorize, re-categorize, custom categorize and energy assign fonts as you see fit.

- 1.) Select (click on and highlight) the font in the font list.
- 2.) Click on the "Categorize" button in the tool bar or select "Categorize Selected Font..." from the "Options" menu.
- 3.) A categorization window appears showing a sample of the font at the top of the window and category selections.
- 4.) Mark or unmark categories and energy levels as necessary.
- 5.) Click the <Done> button.

### Create custom categories:

- 1.) Select (click on and highlight) the font in the font list.
- 2.) Click on the "Categorize" button in the tool bar or select "Categorize Selected Font..." from the "Options" menu.
- 3.) A categorization window appears showing a sample of the font at the top of the window and category selections.
- 4.) Click on the <Edit> button.
- 5.) User definable fields become editable text fields.
- 6.) Type in the name of your custom category(ies).
- 7.) Click the <Save> button.

### Other Category Popup Menu Options

**All Fonts:** displays all fonts in your database file.

**(Please note: your Font Wizard database file contains only references to where fonts are stored and not the actual fonts themselves. Font Wizard NEVER copies or moves your fonts from their physical location.)**

**Last Search Term:** displays fonts relative to the last search term entered into the search field.

**Last Added:** displays the last fonts added to the database. This is especially useful for printing the contents of a specific folder.

**Fonts In System Folders:** shows fonts that are located in your System Font Folders.

\*\*\*

## System Requirements

**Computer:** Macintosh  
**System:** 10.6 or higher  
**Architecture:** Mac Intel processors

\*\*\*

\*\*\*\*\*  
Veenix®Font Wizard  
GlyphLogicEngine® Engine  
©2011 Veenix, LLC, USA  
Tech Support and Info:  
info@veenix.com  
<http://www.veenix.com>  
\*\*\*\*\*

### Legal Disclaimer:

Veenix® Font Wizard and Veenix GlyphLogicEngine® (hereafter known as The Software) is/are the intellectual properties of Veenix, LLC (hereafter known as The Author) and may not be copied, transferred or reproduced, in part or in whole, for any commercial gain without the express permission of The Author. The Software is provided "as is" and The Author makes no claims or warranties regarding the reliability of The Software to perform correctly in any present or future computer operating environments. The Author will, in no event or circumstance, accept liability for any damage, real or implied, incurred in using The Software.