

Version 1.0.14b. ♦ March 1, 2009. ♦ Copyright © 2006-2009 Joakim Braun

# ImageLister



Latest version: [www.jfbraun.com/imageLister](http://www.jfbraun.com/imageLister)

## User manual



Beta version. Minor malfunctions may occur. Bug reports appreciated.

# Contents

1. This is ImageLister.....	3
2. Compatibility and system requirements.....	4
3. Terminology used in this manual.....	4
4. Get started.....	5
5. Preferences: "General" tab.....	6
6. Preferences: "Image reports" tab.....	9
"Collect information" tab.....	9
"Filter images" tab.....	11
"Change IPTC text" tab.....	13
Using "Change IPTC text" for custom filtering.....	16
"Indesign report layout" tab.....	17
7. Technical notes.....	19
8. Terms of use.....	19
9. Pricing and registration.....	19
10. Support and contact details.....	19
11. Acknowledgements.....	19
12. Version history.....	20



# ImageLister

Version 1.0.14b (March 1, 2009) ♦ © 2006-2009 Joakim Braun

## 1. This is ImageLister

ImageLister is a MacOS X application that collects and presents information about images placed in Adobe Indesign documents.

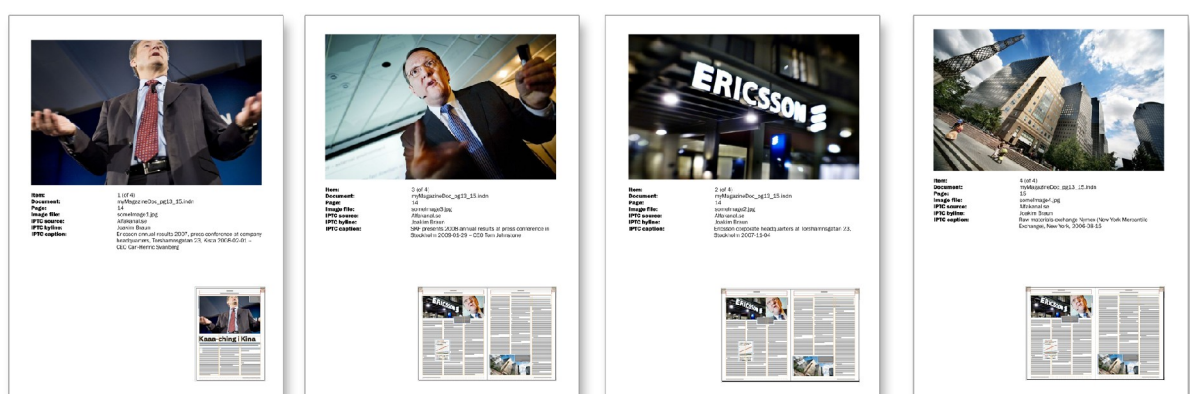
ImageLister saves time for photo editors who need to inspect every page of every new issue to account for image use to agencies and freelancers.

ImageLister makes it an easy task to create reports with various types of information: any IPTC metadata, image frame size on the published page and so on. Images may be filtered out in various ways, so that reports contain only relevant items, not clip art, logos or in-house photography. Reports may be presented as Indesign documents with copies of images and screen dumps of the Indesign pages featuring those images; or reports may be generated as text documents (or clipboard text) suitable for pasting into a spreadsheet.

Image reports may be created for several Indesign documents in one batch operation: simply drop a bunch of Indesign files (or a folder) on ImageLister's icon in Finder.



**Save time.** Turn an Indesign layout file like this...



...into an image report like this, complete with any IPTC metadata you want and screen dumps of the images' parent pages..

## 2. Compatibility and system requirements

<b>MacOS X</b>	ImageLister was developed and tested on MacOS X 10.4 and 10.5, on PPC and Intel Macs. ImageLister may not work as intended on 10.3 and earlier versions.
<b>Adobe Indesign</b>	ImageLister was tested with Adobe Indesign CS, Indesign CS2 and Indesign CS3.
<b>Graphic formats</b>	ImageLister reads IPTC metadata in JPG, Photoshop (.psd), TIFF and EPS files.
<b>Image workflows</b>	<i>ImageLister is entirely restricted to handling metadata (IPTC/XMP) contained by the actual linked images of the processed Indesign documents.</i> Many professional image workflows substitute cropped, resampled CMYK files for the full-resolution RGB files used in layout before files are sent to the printer. For ImageLister to work as expected, this must happen in a way that preserves the IPTC/XMP metadata in the original image files. ImageLister doesn't (and cannot) know about, or track, "original files".
<b>IPTC and Fotostation</b>	If Fotoware's image workflow solution Fotostation is set to substitute CMYK files in EPS format, image metadata is not preserved. The workaround is to set Fotostation to substitute TIFF files instead. This requires a simple change in the ColorMan channel settings which should make no discernible difference for print workflows that involve sending PDF files to the printer.
<b>EPS and Fotostation</b>	When IPTC information in EPS files is edited in Fotostation, the metadata is not stored in the images themselves but elsewhere. This metadata becomes inaccessible to ImageLister.

## 3. Terminology used in this manual

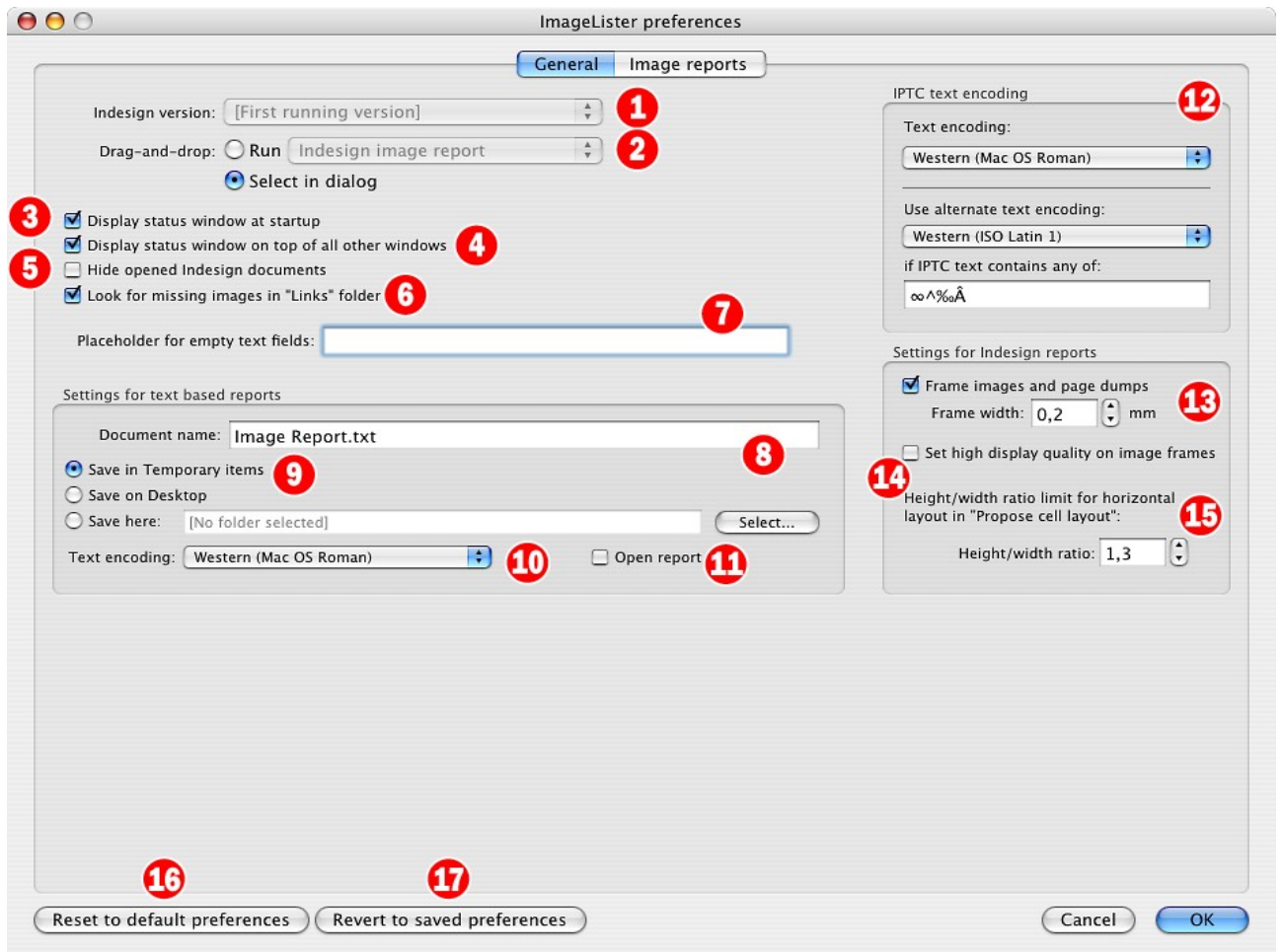
- ☐ **IPTC text.** A format for storing image information ("metadata") in image files. The IPTC format defines a set of tagged information fields such as byline, source, caption and so on. For detailed information about the IPTC format, visit the website of the International Press Telecommunications Council at [www.iptc.org](http://www.iptc.org). The IPTC format is being superseded by Adobe's XMP (Extensible Metadata Platform, see [www.adobe.com/products/xmp](http://www.adobe.com/products/xmp)). While the IPTC format is binary, XMP is XML based. The field overlap isn't complete, but in general metadata format variations are transparent to the user.
- ☐ **Image reports.** These are sets of instructions that tell ImageLister which image information to collect, how to layout the report and so on. Any number of image reports may be defined in ImageLister's preferences.
- ☐ **Indesign image report.** An image report that creates an Indesign document (from a template document selected in the image report settings) with copies of the reported images and screen dumps of their parent pages.
- ☐ **Text based image report.** An image report that creates a text document (or clipboard text) suitable for pasting into a spreadsheet.
- ☐ **Report item.** A set of information (such as file name, IPTC caption text and dimensions on the printed page) about a single image in an image report.
- ☐ **Information field.** A single piece of information in the report item, such as the file path of the image, the IPTC source and so on.

## 4. Get started

- **Browse the manual.** The screen dumps will give you a feel for how ImageLister works and how you can customize the application to suit your needs.
- **Tweak the default preferences.** To enable a quick start, ImageLister contains a built-in template document (\*.indt) for creation of Indesign image reports. Later on, you'll want to customize your own report templates (change style sheets and so on). In any case, a few things need to be set up before going started:
  - Start ImageLister.
  - Open the preferences dialog.
  - In the **General** tab, set up the installed Indesign version that ImageLister should communicate with (the **Indesign version** button at top left).
  - Click **OK** at bottom right of the preferences dialog.
  - Start Indesign.

If Indesign documents (or folders containing Indesign documents) are dropped on ImageLister's icon, they should now open in Indesign. After a moment, an illustrated report will be created according to the settings of "Indesign report".

## 5. Preferences: "General" tab



### 1 Indesign version

A user may have several versions of Indesign installed. This setting selects the installation that ImageLister should communicate with. The button lists all installed versions of Indesign<sup>1</sup>. If the **First running version** option is selected, ImageLister will communicate with the first Indesign version that is currently running.<sup>2</sup>

### 2 Drag-and-drop

This setting toggles what should happen when Indesign documents (or folders containing Indesign documents) are dropped on ImageLister's icon in Finder. The **Run** option means that the image report selected in the button to the right is executed. The **Select in dialog** option means that you will be prompted to select an image report to execute. The prompt looks like this:



<sup>1</sup> Technically, all applications that the system considers as editors of documents ending in ".indd".

<sup>2</sup> The first process in the system's process list that has a creator code of 'InDn'.

### 3 Display status window at startup

The status window displays information about what ImageLister is currently doing. It looks like this:



The status window is automatically displayed when ImageLister begins to execute an image report. Checking the box means that ImageLister will display the status window immediately on application startup.

### 4 Display status window on top of all other windows

Checking this box will keep the status window floating on top of all other application windows, whether ImageLister is the foreground (active) application or not. When unchecked, the status window is handled as appropriate for a panel (floating window) and hidden when ImageLister is not the foreground application.

### 5 Hide opened Indesign documents

Indesign is able to open documents without actually displaying any windows on the screen. This may speed up execution, as the screen doesn't have to be updated as the reported documents load.

### 6 Look for missing images in "Links" folder

If a linked image file is not found, and a folder named "Links" exists in the same folder as the Indesign document, ImageLister checks if an image with the same name exists in the "Links" folder, and uses it if it does. *This should be checked when using Indesign CS2 and CS3. These versions don't automatically update links when folders for "packaged" documents are moved.*

### 7 Placeholder for empty text fields

This text is substituted where IPTC fields are missing or empty.

### 8 Document name

File name for saving text based image reports.

### 9 Save in...

Where to save text based image reports.

### 10 Text encoding

Text encoding to use for text based image reports. If you get "funny characters" when the file is opened in your default text editor, make sure that the text encoding assumed by the text editor when opening files matches the text encoding selected with this button.

### 11 Open report

Opens the text based image report file when finished, using the system's default text editor.

### 12 IPTC text encoding

Every byte of single-byte "raw text" (such as IPTC metadata) may represent a variety of characters depending on which text encoding and writing system was used by the writer. The text as such (and the IPTC format) contains no information about this. Selecting the appropriate text encoding here tells the computer how to



translate raw bytes into characters displayed on the screen. If you get "funny characters" in your IPTC text, here's where you can get rid of them.

### Text encoding

The text encoding normally used in the images that you handle. This is likely to be either **Western (MacOS Roman)** or **Western (ISO Latin 1)**.

### Use alternate text encoding

This text encoding is used if the text, as converted with the first text encoding, contains any of the characters in the text field below. This setting allows for transparent handling of images where the IPTC may be encoded in either of two text encodings.

## 13 Frame images and page dumps

A copy of every reported image is placed in Indesign image reports. Optionally, a screen dump of the page (or spread) containing the image may be placed in the report. Picture frames created for these purposes are framed (in black), if the line width entered here is > 0.

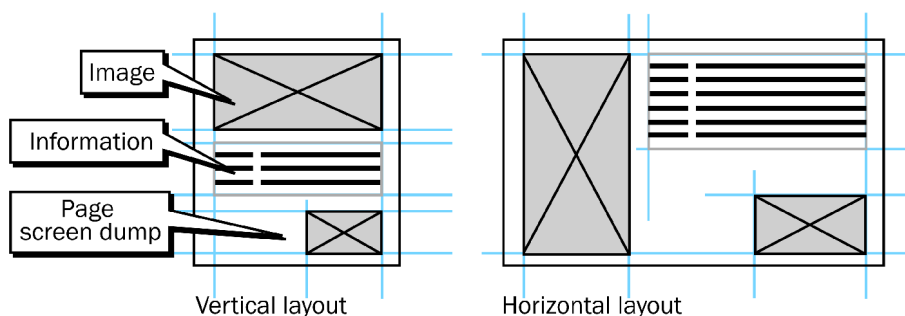
## 14 Set high display quality on image frames

If Indesign documents contain images that have been resampled to print resolution (by an image workflow system, for instance), the images placed in the Indesign image reports may become "pixelated" due to rescaling. Appearance is improved by setting image frame display quality to high (at a slight speed trade-off).

## 15 Height/width ratio limit for horizontal layout in "Propose cell layout"

Each page of an Indesign image report may contain one or several report items. In effect, every report page can be thought of as a *grid*, with multiple rows and columns (*see page 16*). Each cell contains three items: the image frame with the reported image, the text frame for the report text and, optionally, an image frame for the screen dump of the original page containing that image.

To ease the figuring out of frame placements, ImageLister can propose default layouts for the frames in every cell. Depending on if the cell is "horizontally" or "vertically" oriented, the text frame will be placed below the image frame, or to the right of it.



The value in this text field is the ratio between the cells' height and width (that is, width divided by height) that triggers the second, horizontal, layout mode when proposing cell layouts.

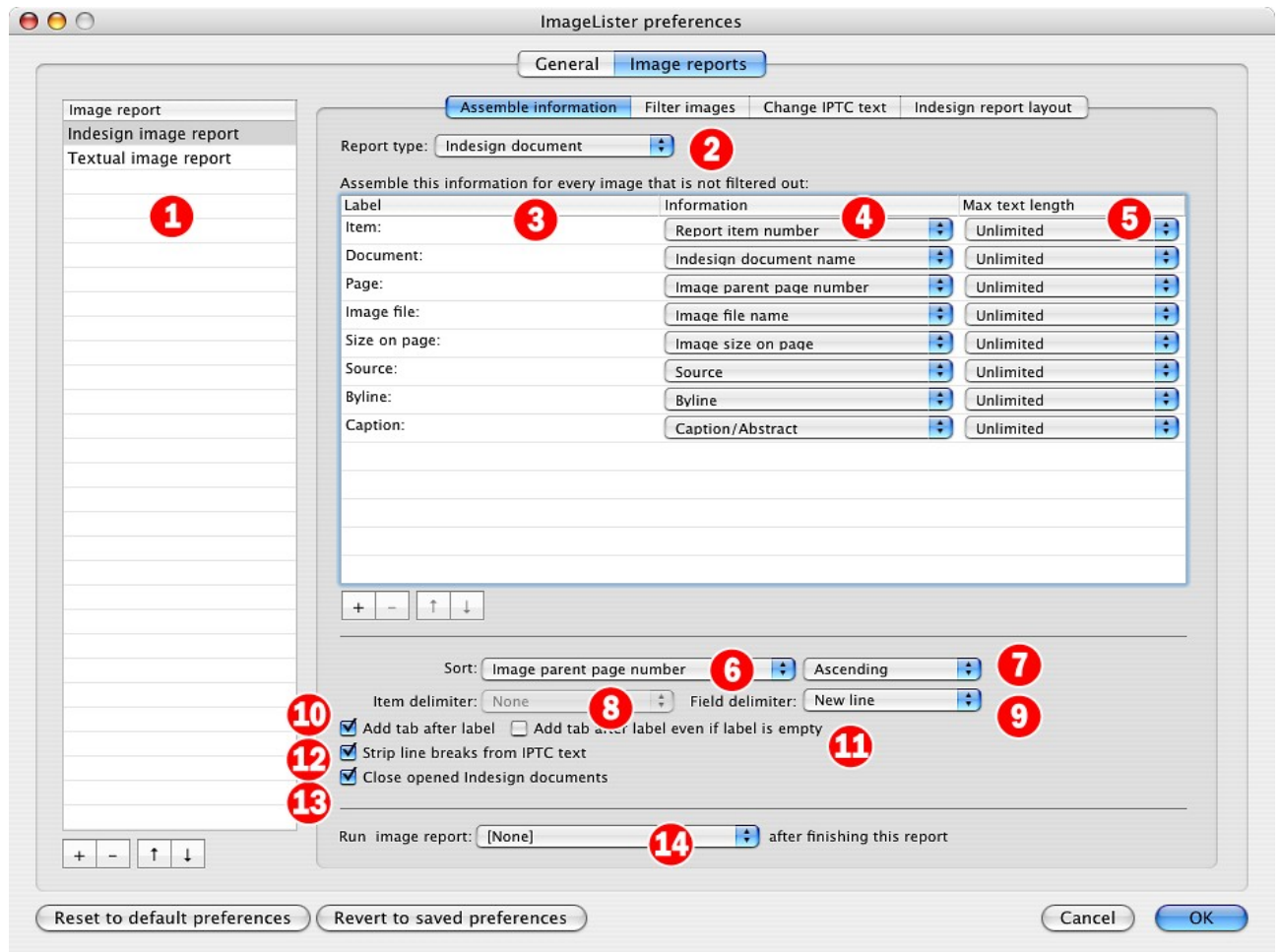
## 16 Reset to default preferences

Returns ImageLister's preferences to the "out-of-the-box" factory defaults. Any custom settings, including defined image reports, are discarded.

## 17 Revert to saved preferences

Reloads the last saved preferences, discarding any unsaved changes..

## 6. Preferences: "Image reports" tab



### 1 Image reports (list)

Image reports are instruction sets that tell ImageLister what information to assemble for every image and how to format the resulting report. This list contains defined image reports. Create a new image report by clicking the **+** button at the bottom of the list. To change the name of the image report, double-click it in the list and enter a new name. The image reports in this list also show up in the **Run image report** submenu.

At right of the list are the settings of the currently selected image report.

## "Assemble information" tab

### 2 Report type

The type of report to create: an **Indesign document** (an illustrated report using an Indesign template file, set up in the **Indesign report layout** tab), a **Text document** or **Text to clipboard** (the same text as in **Text document**, but copied to the clipboard instead of saved to a file).

### 3 Label

A brief text that identifies the information field in the next column. In Indesign image reports, label text will precede the information. In textual image reports, all labels are collected into a separate, initial row of "column headers".

## 4 Information

For every reported image, the information in the list is assembled. Three types of information are available:

- *IPTC fields* (**Byline**, **Source**, **Caption** and so on).
- *Information related to the image file* (file name, path, file size, image frame size on the page...).
- *Information about the Indesign document* containing the image (file name, path, modification date...).

As noted above, the label column provides a means of labeling the information in the report.

## 5 Max text length

The text length of some IPTC fields may be considerable. This setting potentially improves report layout by truncating the text after a given number of characters.

## 6 Sort

How to sort the items of the report. The button contents reflect the information fields in the list above. If **None** is selected, images will be reported on a document by document basis, in sequential link order.

If the individual Indesign files that make up an issue of a publication are correctly section-numbered, and **Image parent page** is selected as the sorting field, report items will be presented in page order, from the first to the last page of the publication, when the Indesign files are dropped on ImageLister's icon in Finder.

## 7 Sort order

Ascending or descending.

## 8 Item delimiter

This setting applies to text based image reports only. It controls which character (**Newline**, **Tab** or **Space**) to append after each report item's text. Selecting **Newline** puts each report item on a separate line.

## 9 Field delimiter

The character (**Newline**, **Tab** or **Space**) to append after each individual information field of the report item.

For Indesign image reports, **Newline** is appropriate and puts each information field on a separate line.

For text based reports, **Tab** is likely to be preferable. In this case, a tab is appended to every information field, making the report text suitable for pasting into a spreadsheet.

## 10 Add tab after label

Whether to append a tab character after label text. (If there is no label text, a tab will *not* be appended, unless **Add tab after label even if label is empty** is checked.)

## 11 Add tab after label even if label is empty

Whether to add tabs to "blank" labels that don't contain any text.

## 12 Strip line breaks from IPTC text

Typically, the report text will be easier on the eye if it doesn't contain lots of line breaks. If this setting is checked, a space is substituted for any line breaks in IPTC text.

## 13 Close opened Indesign documents

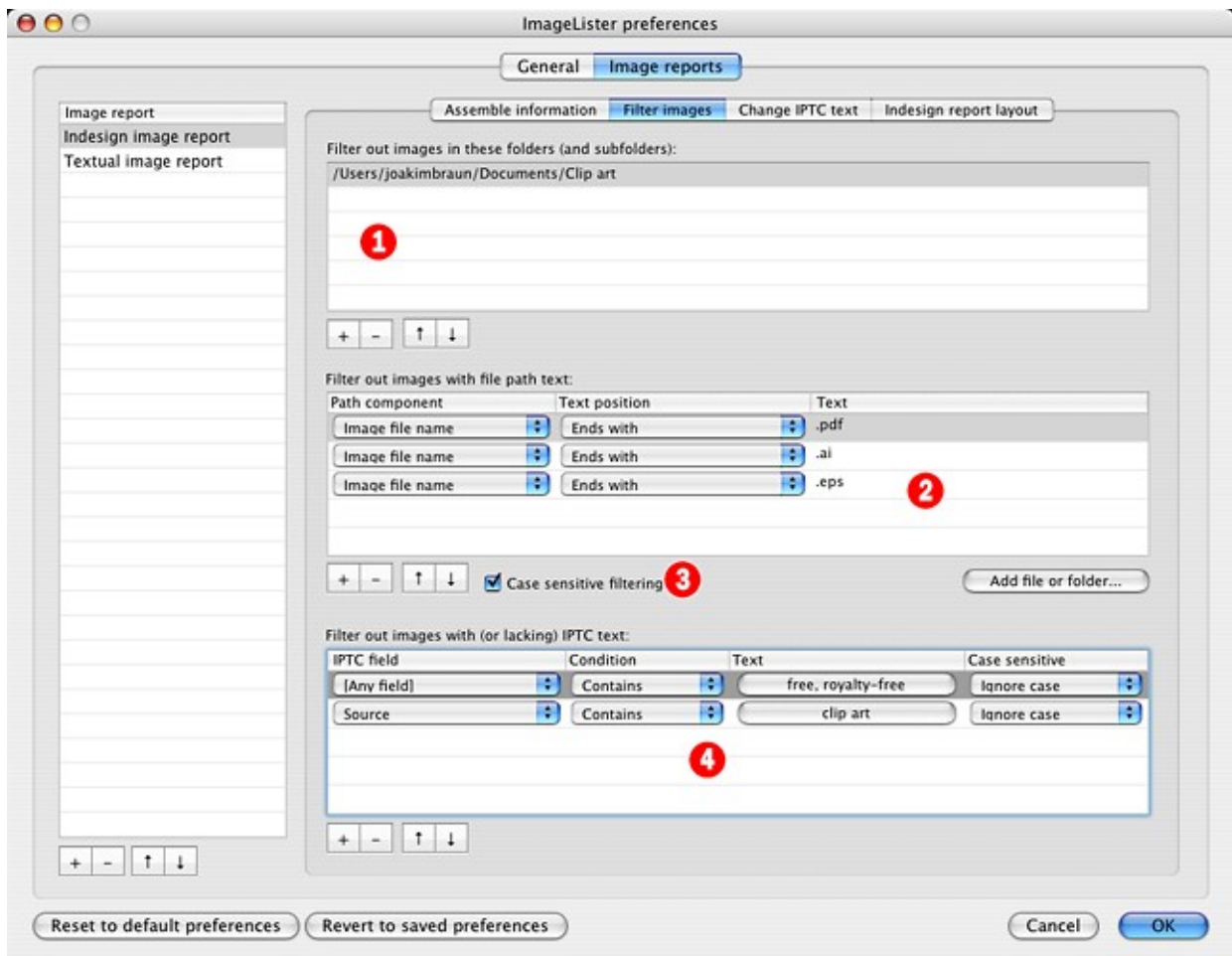
ImageLister fetches information about images placed in Indesign documents by opening the documents in Indesign. If this box is checked, ImageLister will close any opened documents after having fetched the information, reducing Indesign window clutter. (Documents which were already open are *not* closed.)

## 14 Run image report... after finishing this report

This setting allows for "daisy-chaining" image reports. Image reports of several formats can be executed in a single operation, such as an illustrated Indesign image report and a textual image report suitable for pasting into a spreadsheet. The reports will "receive" the same basic set of images from the processed Indesign documents. Filtering is applied according to the settings in each image report.

### "Filter images" tab

The settings in this tab allow for removal of undesired images from the report. Images that match *any* of the filter criteria here are filtered out.



### 1 Filter out images in these folders (list)

Images in the folders in the list (and their subfolders) are not reported. Add folders by drag-and-dropping them on the list from Finder, or by clicking the + button.

### 2 Filter out images with file path text (list)

Images matching any of the criteria in the list are not reported. Add folders and files by drag-and-dropping them on the list, or by using the **Add file or folder...** button. Asterisk truncation ("some text\*") is *not* possible.

**Path components** are volume names, folder names and file names (the separation character is "/"). The path component column narrows the filtering in various ways.

By using this list, the following is possible:

**Filter out single files:** Enter the file path in the **Text** column (or drop the file on the list), select the path component **Entire path** and the text position **Is**.

**Filter out filetypes:** Enter the file type suffix (such as ".eps") in the **Text** column, select the path component **Image file name** and the text position **Ends with**. The screen dump above shows a setup where PDF images, Adobe Illustrator files (".ai") and Encapsulated Postscript files (".eps") are filtered out.

**Filter out images in folders:** Enter the folder path in the **Text** column (or drop the folder on the list), select the path component **Entire path** and the text position **Starts with**. (The filtering applies to subfolders as well.)

### 3 Case sensitive filtering

Normally, lowercase text (".eps") and uppercase text (".EPS") are treated as the same thing. Check this box if you wish to differentiate between uppercase and lowercase.

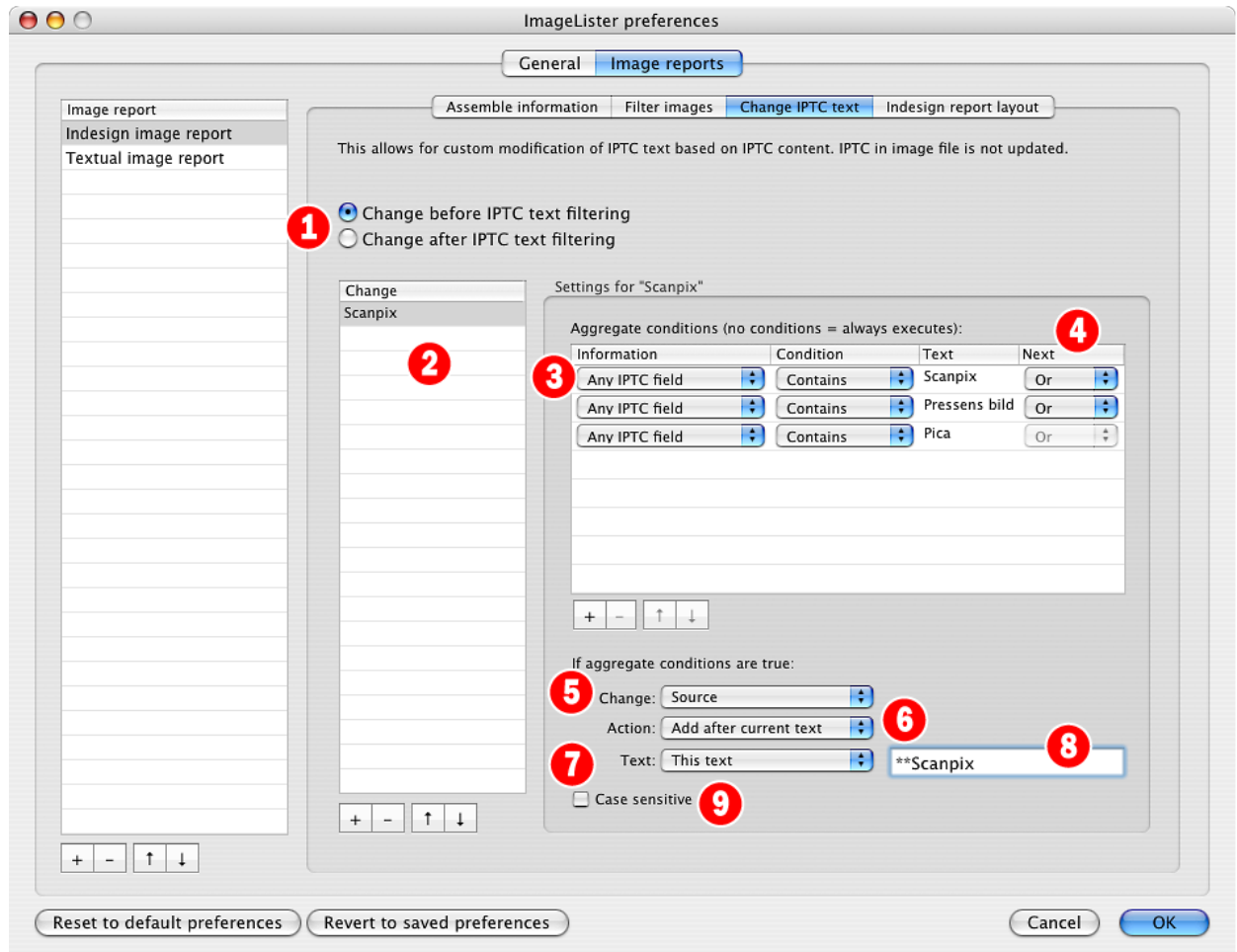
### 4 Filter out images with IPTC text (list)

This list provides a method for filtering out images based on IPTC content. In this way, internally produced material or clip art with particular IPTC properties may be left out of the report. Asterisk truncation ("some text\*") is *not* possible.

## "Change IPTC text" tab

The settings here allow for conditional modification of IPTC content. This may be useful if carelessly "texted" material is used, or if material from multiple IPTC sources is to be reported to a single photo agency. Note that the changes are *not* saved in the image file; they are used for generating the report only.

The real-world example in the screen dump below sets the **Source** IPTC field to "Scanpix" if *any* IPTC field contains "Reuters", "Scanpix", "Pressens bild" or "Pica". In this way a consistent attribution is ensured even if images are somewhat carelessly textured.



### 1 Change before IPTC text filtering

As described on page 11, images may be filtered out based on IPTC contents. This setting controls whether modification of IPTC text is to be done before or after such filtering.

### 2 Changes (list)

Any number of IPTC changes may be done. All changes in this list are executed on every image of the report. Changes are cumulative: each change operates on the aggregated result of all previous changes.

### 3 Aggregate conditions (list)

The conditions in the list as a whole must be matched for IPTC text change to occur. The conditions are checked row by row.

## 4 Next

The logical (Boolean) connection with the next condition row: **And** or **Or**. The **Next** column provides a method for combining condition rows: conditions linked with **And** can be thought of as a single, aggregate condition.

This probably works the way you expect it to. The technical details, though, are:

- If the condition row is *true* and **Next** is set to **Or**, matching ceases, the aggregate condition is *true* and the change is executed.
- If the condition row is *true* and **Next** is set to **And**, subsequent condition rows are checked one by one until a condition row is reached where the condition is *false*, or where **Next** is set to **Or**, or the end of the list is reached. This means that contiguous sets of condition rows with **And** are treated as a single row; if any is false, the aggregate condition is false.
- If the condition row is *false* and **Next** is set to **And**, matching ceases and the aggregate condition is *false*.
- If the condition row is *false* and **Next** is set to **Or**, matching continues.

## 5 Change

The target IPTC field whose contents are modified if the aggregate condition is *true*.

## 6 Action

The type of modification done if the aggregate condition is true. The options are: **Set text to** (existing IPTC field content is replaced), **Add before current** (text is prepended to existing IPTC field content), **Add after current** (text is appended to existing IPTC field content) and **Search/replace** (a separate search/replace is run on the IPTC field content – if this option is selected, an additional search text field is displayed).

## 7 Text

The source of the text used to modify the existing IPTC field content. Options are **This text** (the contents of a text field that is displayed next to the **Text** button) or **IPTC field** (a button for selecting the field is displayed next to the **Text** button).

## 8 (Text field)

Text used to modify the existing IPTC field content. If **Text** is set to **IPTC field**, a button for selecting the field is displayed here instead.

## 9 Case sensitive

Toggles case sensitivity for condition matching and (when applicable) **Search/replace**.



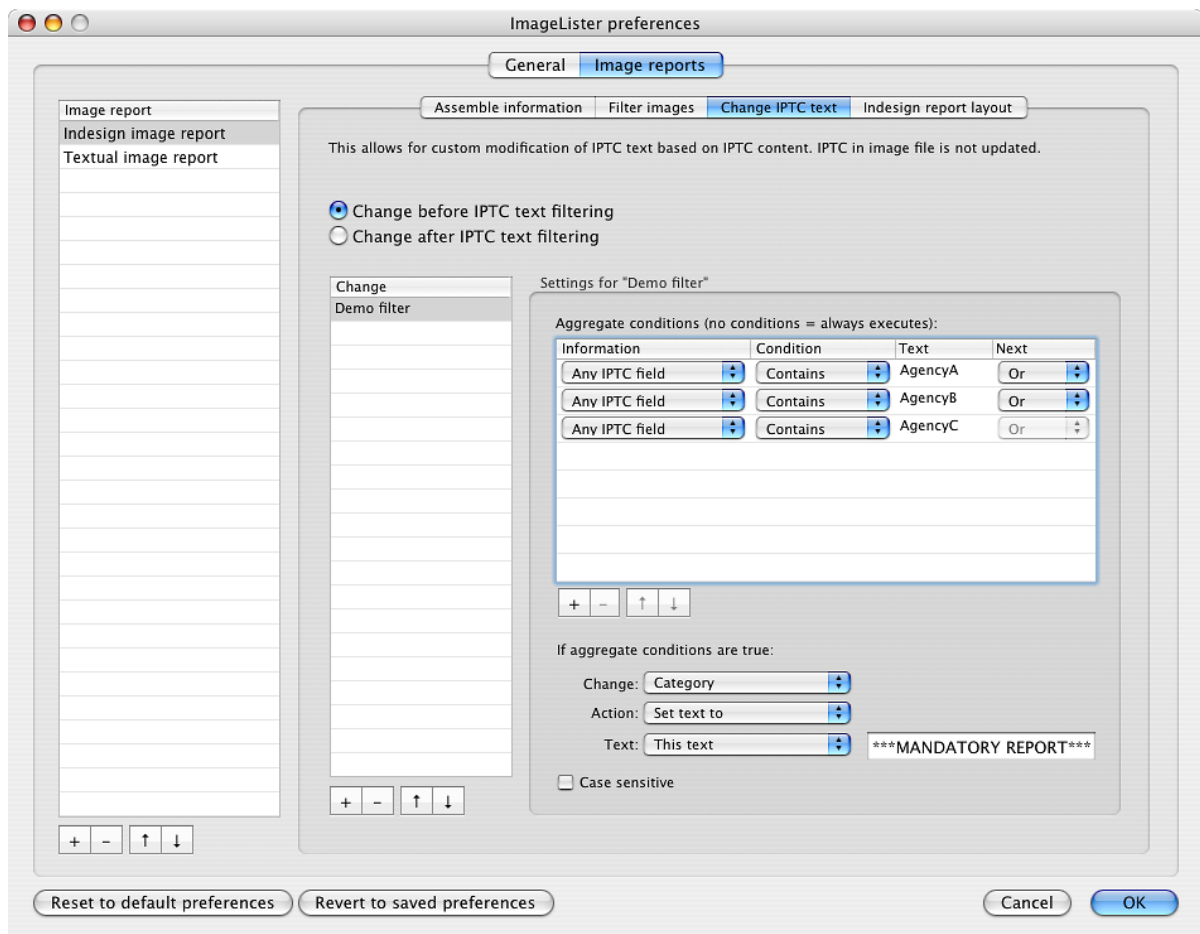
## Using "Change IPTC text" for custom filtering

A side effect of the **Change IPTC text** functionality is that it becomes possible to set up "synthetic" IPTC fields which can then be used for IPTC text filtering.

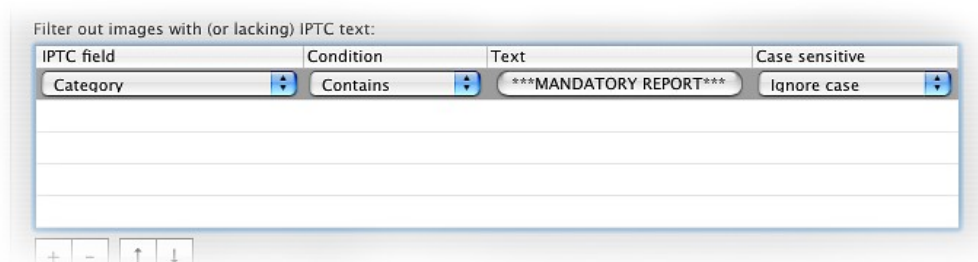
Consider the following scenario: A newspaper has a consistent image inflow from a limited number of sources. Let's call the sources "Agency A", "Agency B" and "Agency C". If these bylines occur in any IPTC field, we know that we'll be required to report the image use. Otherwise, there's no need to report anything.

So, if any of these agency names occur, we set the IPTC field "Category" to "\*\*\*MANDATORY REPORT\*\*\*".

We also select the radio button **Change before IPTC text filtering**.



In the **Filter images** tab (see page 11), we then filter out all images where the "Category" field *doesn't* contain the text "\*\*\*MANDATORY REPORT\*\*\*".



The net effect here, then, is that the report only includes images from AgencyA, AgencyB and AgencyC.



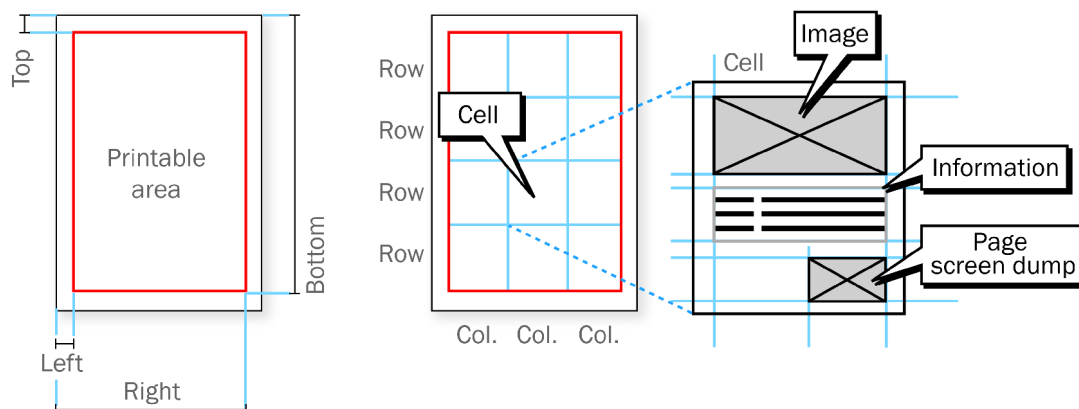
## "Indesign report layout" tab

The settings in this tab control the position of the text frames and image frames that make up an Indesign image report.

The page format ("paper size") of the report is controlled by the Indesign template document.

Each report page contains one or more rows and one or more columns.

Every "cell" formed in this manner contains an image frame with a copy of the reported image, a text frame with the report text assembled for that image and, optionally, a second image frame with a screen dump of the Indesign page (or spread) that contained the image (*for details, see page 8*).



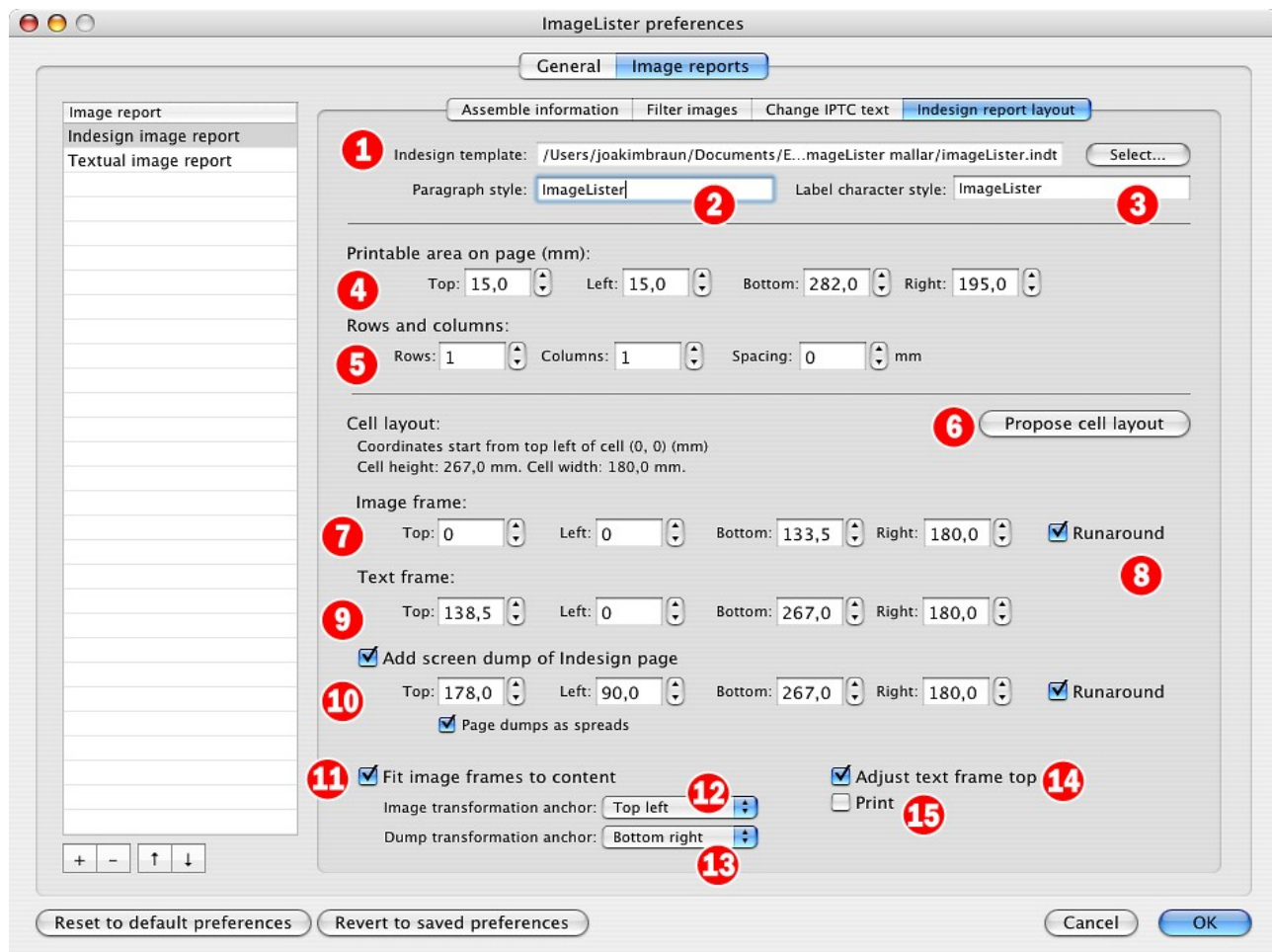
The position of the report's *printable area* on the page are coordinates (in millimeters) extending from the top left corner of the page (see left figure above).

A report in the A4 paper format (210 x 297 mm), with a 15mm gutter along all four edges, will have the following coordinates: **Top** 15mm, **Left** 15mm, **Right** 180mm and **Bottom** 267mm.

*Note that the report's printable area is thus defined in ImageLister, independently of the margins set up in the template document's master pages. The printable area is also independent of the paper size of the Indesign document.*

The position of the *cells* within the printable area is indirectly controlled by the number of rows and columns and the width of the gutter between the rows and columns. *Again, this is defined in ImageLister, independently of any settings in the template document.*

The position of the *image and text frames* within the cells are coordinates (in millimeters) extending from the top left corner of each cell.



## 1 Indesign template

The Indesign template document to be used for the creation of Indesign image reports. The template should contain the paragraph and character styles referred to below. *If no template is set, you'll be given the option of using a built-in template when running an Indesign image report.*

## 2 Paragraph style

The overall paragraph style applied to all report text.

## 3 Label character style

The character style applied to labels.

## 4 Printable area

The bounds of the report "on the page", in millimeters, extending from the top left corner of the page. In the settings shown in the screen dump above, the height and width of an A4-sized page (210 x 297 mm) is inset by a margin of 15 mm along all edges.

## 5 Rows and columns

The printable area is divided into **Rows** and **Columns**. The inter-row and inter-column gutter is the **Spacing**. The number of report cells on each page is controlled by the number of rows and columns. Each cell contains an image frame with a copy of the reported image, a text frame with the report text assembled for that image and, optionally, a second image frame with a screen dump of the Indesign page (or spread) that contained the image.

## 6 Propose cell layout

This makes ImageLister propose a positioning of the text and image frames inside each cell. It will probably need some fine-tuning, but this is a good starting point for creating your own report layouts.

Depending on the cells' height/width ratio, a "horizontal" or "vertical" positioning is used (*see page 8*).

The height and width of individual cells is shown to the left of the button.

## 7 Image frame

The bounds of the image frame that will contain a copy of the reported image. Offset in millimeters, from the top left corner of the cell.

## 8 Runaround

Whether to activate a runaround for the image frame. This may be useful for some layouts. The runaround is the default frame runaround set up in the template document.

## 9 Text frame

Offset in millimeters, from the top left corner of the cell, of the text frame that will contain the assembled text for the report item.

## 10 Add screen dump of Indesign page

When checked, an additional image frame is created with a screen dump of the original page containing the reported image. The following fields set up the offset in millimeters, from the top left corner of the cell, of the page dump frame. Note that this involves having Indesign export a special JPG image of every page or spread in the processed documents, which may involve a noticeable delay.

## 11 Fit image frames to content

When images and page screen dumps are placed in the report, image frames are created with the initial position specified in these settings. The image is then placed and resized to fit inside the frame (showing the entire image). If **Fit image frames to content** is checked, image frames are then resized to fit the resulting image, so that the frame doesn't use any excess space.

## 12 Image transformation anchor

The "anchor point" or origin point of transformations applied to the image frame when fitting it to its content. The anchor point remains stationary during the transformation.

## 13 Dump transformation anchor

The "anchor point" or origin point of transformations applied to the screen dump image frame when fitting it to its content. The anchor point remains stationary during the transformation.

## 14 Adjust text frame top

This is useful where the text frame is positioned below the image frame. When checked, the top edge of the text frame is repositioned 5mm below the bottom edge of the image frame. This setting keeps the spacing between image frame and text frame constant, which may improve the report layout.

## 15 Print

Prints the finished report using default printer settings. A print dialog is *not* shown.

## 7. Technical notes

- Communication with Indesign is handled through AppleScript. The functions are defined in script files in the application package. There's a possibility for hacker minded types to add custom report postprocessing code here.
- Indesign documents are opened in "user interaction none" mode. Any error dialogs that Indesign may show when opening the document normally are *not* displayed. This means, among other things, that missing or changed links are *not* updated.
- Missing links are *not* included in image reports. Since ImageLister can't know where the missing file is, it can't access the image information.
- If an error occurs during AppleScript communication with Indesign, ImageLister will show an error message, beginning with: "Indesign says:".

## 8. Terms of use

The unregistered version of ImageLister is fully functional during 30 days.  
After this trial period, the unregistered version is limited to 5 images per report.

The trial period allows you to test ImageLister's functionality and compatibility with your workflow. If you decide to order the full, registered version, the responsibility for checking out beforehand that ImageLister matches your requirements and is compatible with your workflow rests with you.

A registered version of ImageLister may be installed and used *either* (1) on any number of computers, provided that it is used for the same individual publication title only, *or* (2) on a single computer, for use with any number of publications. For other requirements, please contact [joakim.braun@jfbraun.com](mailto:joakim.braun@jfbraun.com).

You are using ImageLister entirely at your own risk, with no explicit or implicit guarantees or any liability whatsoever.

Your user information and personal data will not be provided to third parties in any way.

Redistribution of ImageLister is not permitted.

## 9. Pricing and registration

A full version of ImageLister 1.0.14 is 350 €. Swedish customers, please add 25% VAT.

Payment by PayPal to account [joakim.braun@jfbraun.com](mailto:joakim.braun@jfbraun.com) (please use the button at [www.jfbraun.com/imageLister](http://www.jfbraun.com/imageLister)). Major credit cards accepted. You will receive a registration confirmation with further instructions and a serial number within 24 hours of receipt of payment.

Registered version users are entitled to 2 years of free updates (starting on the payment date). Upgrade by downloading the current ImageLister version at [www.jfbraun.com/imageLister](http://www.jfbraun.com/imageLister).

## 10. Support and contact details

Suggestions and bug reports welcome. I will help you as far as time permits.  
Please e-mail me at [joakim.braun@jfbraun.com](mailto:joakim.braun@jfbraun.com).

I will probably *not* be able to assist you in fine-tuning your image workflow's metadata handling!

The current version of ImageLister is always available at [www.jfbraun.com/imageLister](http://www.jfbraun.com/imageLister).

## 11. Acknowledgements

TinyXML © 2000-2002 by Lee Thomason, [www.grinninglizard.com](http://www.grinninglizard.com), [www.sourceforge.net/projects/tinyxml](http://www.sourceforge.net/projects/tinyxml).

## 12. Version history

Version	Date	Changes
1.0.14b	March 2, 2009	<ul style="list-style-type: none"><li>● Fixed frame stroke width malfunction</li><li>● Updated built-in Indesign template</li></ul>
1.0.13b	March 1, 2009	<ul style="list-style-type: none"><li>● Fixed a Cocoa Bindings bug</li><li>● First release.</li></ul>

## IPTCViewer

Your designer colleagues might like **IPTCViewer**, an application for displaying IPTC metadata from selected images in Indesign.

IPTCViewer can also add automatic, extensively configurable bylines and captions in Indesign.

IPTCViewer is shareware (50 EUR). Download it at [www.jfbraun.com/iptcviewer](http://www.jfbraun.com/iptcviewer).

