

# SIM User Guide

Version 02/03/2018

*This document describes the version 3.6x from February 2018 but may also apply to previous or later versions. Simple Inventory Manager is an active software that is regularly improved and updated. To avoid complex automatic updates, which can slow down PC startups, it is you who decides when to update by consulting the website [www.simple-inventory-manager.com](http://www.simple-inventory-manager.com), where you can also find videos and application examples.*

# Table of contents

1	Introduction.....	4
1.1	Efficient.....	4
1.2	Simple .....	4
1.3	Strength .....	4
1.4	International .....	4
2	Getting started .....	5
2.1	Installation.....	5
2.2	Automatic Installation .....	5
2.3	ZIP Files.....	6
2.4	User Interface .....	6
2.5	Screen sections.....	6
2.6	Record Selection.....	6
2.7	Right click.....	7
2.8	Column width .....	7
2.9	Sorting Records.....	7
2.10	Searching Records .....	8
3	Products tab .....	9
3.1	Display .....	9
3.2	Mouse click.....	9
3.3	Products tab buttons.....	9
3.4	Export .....	10
3.5	Product definition.....	10
4	Barcode window .....	12
4.1	Principle.....	12
4.2	Scan modes.....	12
5	Suppliers .....	14
5.1	Display .....	14
5.2	Suppliers tab buttons .....	14
5.3	Supplier definition .....	15
6	Logs tab.....	16
6.1	Display .....	16
6.2	Log tab buttons.....	16

6.3	Log definition.....	17
7	Label printer tab .....	18
7.1	Display .....	18
7.2	Log tab buttons.....	18
7.3	Simple label settings.....	19
7.4	Multiple label printing .....	20
7.5	Zebra printers .....	20
7.6	Code 128 labels .....	21
8	Inventory tab .....	22
8.1	Display .....	22
8.2	Inventory definition.....	22
8.3	Inventory tab buttons.....	23
9	Tools tab .....	24
9.1	Display .....	24
9.2	Tools Configuration tab .....	24
9.3	Configuration tab buttons .....	24
9.4	Tools Data tab.....	25
9.5	Data tab buttons.....	25
10	SIM Options .....	27
10.1	Using a list of products to remove .....	27
11	How to do .....	28
11.1	Switching from the free to licensed version.....	28
11.2	Import data.....	28
11.3	Add an option to SIM.....	28
11.4	Networking .....	29
11.5	Intranet.....	29
11.6	Extranet .....	29
11.7	Remote base.....	29
12	Advanced features.....	30
12.1	Parameters .....	30

# 1 Introduction

---

## 1.1 Efficient

SIM was developed for instant implementation and immediate usage by any kind of user, for all types of organization or activity.

## 1.2 Simple

Unlike many inventory managers, SIM is not simply an option or addition to accounting or business management software suites. It is a tool for field employees working directly with the inventory, who are interested in real time availability, monitoring and supply. Easy use and ergonomics take precedence over administrative and financial aspects.

## 1.3 Strength

Built using the Microsoft.Net standard and a SQL database, SIM is an open and scalable software. Many variants exist, and all modifications and improvements that you probably need are already available or easily attainable. To ensure that the software remains simple, its architecture is modular: you only pay and see what is useful to you.

## 1.4 International

Since 2014, SIM is available in English, Spanish, and German, at no extra charge. You, yourself can translate the SIM text file, and adapt it to your country, culture, or even your practice. Sometimes the original name GSM (Gestion de Stock Modulaire) may appear instead of SIM.

## 2 Getting started

---

### 2.1 Installation

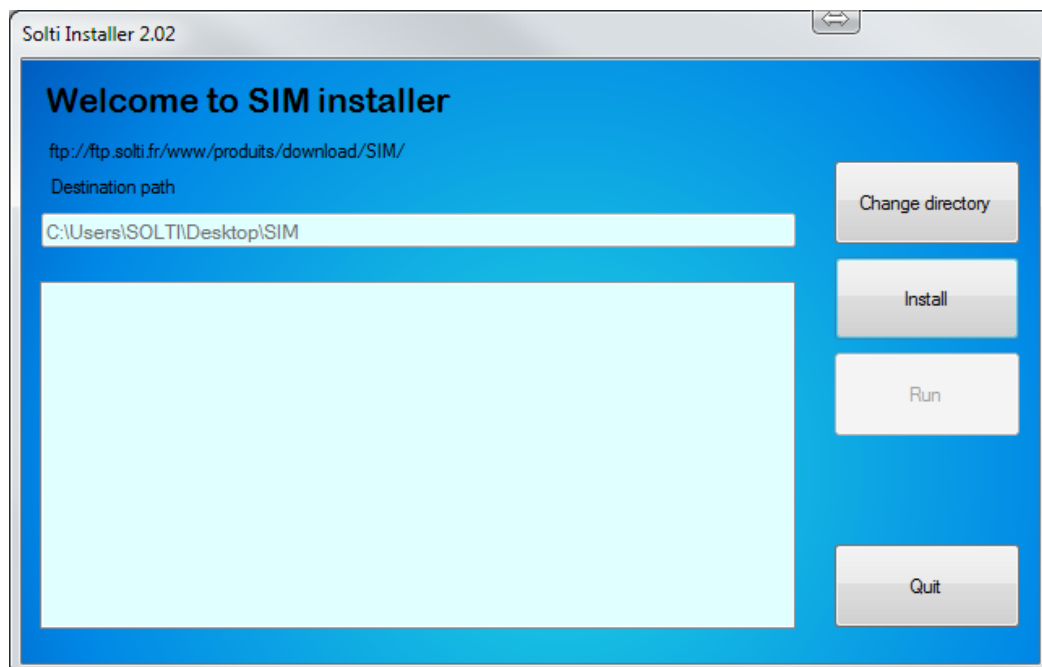
The best quality of SIM is the easiness in its use. Installing the software consists of copying a directory containing a dozen files, anywhere on your PC. We recommend you to simply download the files from [www.simple-inventory-manager.com](http://www.simple-inventory-manager.com)

**Download SIM for free**

It poses no threat to your PC! The easy process to installing the software also allows using SIM in a number of directories and cloud networks, for which you can consult us for more information.

### 2.2 Automatic Installation

On certain websites, you find installer.exe files to download. By running this program, the files are copied from the SIM website into a directory of your choice, which by default is the Desktop/SIM.



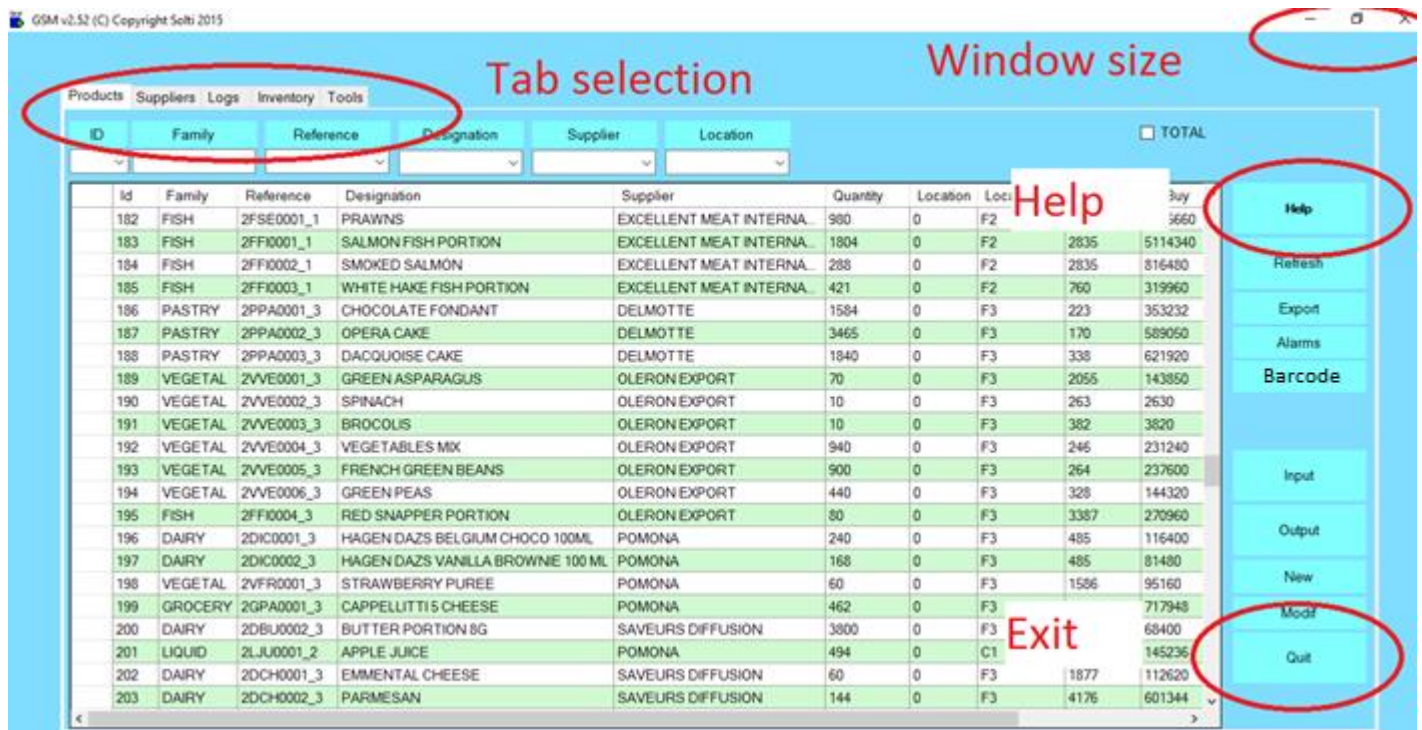
The “Change directory” button allows you to install it anywhere on your disk. The “Install” button will perform loading. The “Launch” button will run SIM. You only need to create a shortcut on your desktop or taskbar.

## 2.3 ZIP Files

On certain websites, you will find a SIM.zip file to download. It is a compressed SIM directory. The step by step procedure for installing the software is available on the website both as a video and as a pdf file which you can easily download.

## 2.4 User Interface

The user interface has 4 tabs or 4 different pages. These tabs perform in the same way as other Windows applications like Excel.



Each tab contains a table called a “DataGrid” containing data

## 2.5 Screen sections

Whichever the tab, each display includes 4 sections dedicated to the following actions:

In the upper left hand corner, the tab selection corresponds to the work to be done

- The search boxes (or scroll lists), according to the tab selected
- The data display area
- The button area which proposes actions to be performed on the selected line.

## 2.6 Record Selection

Each line of data is known as a ‘record’. Most actions are accessible by clicking on the button located to the left of each relevant line. This precaution prevents launching actions without having explicitly chosen the line.

Products Suppliers Logs Inventory Tools						
ID	Family	Reference	Designation	Supplier	Location	<input type="checkbox"/> TOTAL
182	FISH	2FSE0001_1	PRAWNS	EXCELLENT MEAT INTERNA...		2025660
183	FISH	2FFI0001_1	SALMON FISH PORTION	EXCELLENT MEAT INTERNA...		5114340
184	FISH	2FFI0002_1	SMOKED SALMON	EXCELLENT MEAT INTERNA...		816480
185	FISH	2FFI0003_1	WHITE HAKE FISH PORTION	EXCELLENT MEAT INTERNA...		319960
186	PASTRY	2PPA0001_3	CHOCOLATE FONDANT	DELMOTTE		353232
187	PASTRY	2PPA0002_3	OPERA CAKE	DELMOTTE		589050
188	PASTRY	2PPA0003_3	DACQUOISE CAKE	DELMOTTE		621920
189	VEGETAL	2VVE0001_3	GREEN ASPARAGUS	OLERON EXPORT		143850
190	VEGETAL	2VVE0002_3	SPINACH	OLERON EXPORT		2630
191	VEGETAL	2VVE0003_3	BROCOLIS	OLERON EXPORT		3820

## 2.7 Right click

Like most Windows applications, a right click on a line opens a user menu. This enables triggering only one action at a time on the selected item. A list of possible actions is available on buttons to the right of the screen, which can be performed on several items at once.

CAKE	DELMOTTE	3465
JOISE CAKE	DELMOTTE	1840
N ASPARAGUS	OLERON EXPORT	143850
CH		
OLIS		
TABLES MIX		0
CH GREEN BEAN		0
V PEAS		0

- Insert products to the stock (buy)
- Output products from the stock (sell)
- Modification of selected product
- Create a new product
- Cancel

## 2.8 Column width

Each table column (the DataGrid or the grid) can be widened or narrowed by selecting the line that separates two column headers, and dragging it to left or right. Double-clicking will set the column width to the fitting value.

SSM v2.01 (C) Copyright Solti 2013				
Products Suppliers Logs Inventory				
Family				
	Id	Family	Reference	Designation
▶	60	INTRUSION	AS270	sirène in
	43	INTRUSION	ATS1110	clavier
	44	INTRUSION	ATS1115	clavier

To save the columns width, you need to exit the screen with the 'quit' button: the next time you launch the application, the saved widths will be used.

## 2.9 Sorting Records

By default, the data are sorted from oldest to newest. To change this order, simply click on the header of each column to sort it alphabetically from A to Z, or Z to A. This convenient feature is more accessible than using Excel.

	Supplier	Quantity	Mini	Location	U-Buy	T-Buy	U-Se
itecteur IR)	GE SECURI...	2323	0	stock	223	518029	
ession	ELECTRON...	56	25	stock	0	0	
	ABIX	33	15	stock	0	0	
	ACCUNOR...	30	7	stock	0	0	
	ABIX	29	15	stock	0	0	
	support ecran	23	0		0	0	
it	GE SECURI...	22	10	stock	0	0	
	GRUSON	19	5	stock	0	0	
it	GE SECURI...	16	10	stock	0	0	

## 2.10 Searching Records

To facilitate working with large quantities of important data, the search box allows the display of only records fitting the selected criteria. For example, in order to search for all “bolts” type products , just type the word “bolt” in the designated box, and hit “Return” or the button on the right. Only the records including the word ‘bolt’ appear. Also, it is possible to simply enter “bo” or “lts”. In the logbook screen, it is possible to combine criteria.

ID	Family	CodeBarre	Designation	Quantity
62	en	23	short	joh

Id	Family	Reference	Designation	Supplier	Quantity	Mini	Location	U-Buy	T-Buy	U-Sell
1	ROYAL ENFIELD	TSM002/S	T Shirt Ma...	Royal Enfield (apparel)	2	1	BOX 4	719	1438	1650
2	ROYAL ENFIELD	TSM002/M	T Shirt Ma...	Royal Enfield (apparel)	0	1	BOX 4	719	0	1650
3	ROYAL ENFIELD	TSM002/L	T Shirt Ma...	Royal Enfield (apparel)	6	1	BOX 4	719	4214	1650

To return to the display of all the records, just use the “refresh” button. It is possible to recall the last 10 searches performed, by clicking on the arrow of the search box.



## 3 Products tab

---

### 3.1 Display

The first tab is intended for the most common daily work: Incoming and outgoing inventory products. The “products” are all the objects that can be found in the inventory which carry the same references. The first tab displays the quantity of each product and products on warning alert.

### 3.2 Mouse click

When clicking on a line, a popup menu offers the following choices:

- Insert product**
- Output product**
- Modify product**
- Create a new product**
- Print a label**
- Cancel**

The Output and Input functions from the mouse right click moves only one reference at a time, buttons are used to move more than one reference at a time.

### 3.3 Products tab buttons

Button	Action
Help	Opens the user manual for SIM on a web browser.
Refresh	Restores data from database in the original form, after sorting data or to make sure that a networked base is updated.
Clear	Deletes all products from database, after user confirmation.
Export	Send displayed data to an Excel file, respecting the displayed order.
Alarms	Shows only products with quantity under threshold
Barcode	Opens a dialog window for scanning labels
Input	Opens a dialog window to add products into stock
Output	Opens a dialog window to remove products from stock
New	Creates a new product reference
Modif	Edits the selected line to alter a reference
Quit	Exits the application

### 3.4 Export

One of the most useful button, that you will find in most tables, is the Export button. SIM can export data to many formats.

The CSV format just export the current displayed selection, and do not need to have Excel installed. CSV format may change according to your localization settings. A parameter IMPORT\_CSV enables you to re-define the separator in case of problem.

XLS and XLSX formats require Excel. If you have an error such as “ACE.OLEDB” not installed, you have to install the missing component from Microsoft WebSite.

### 3.5 Product definition

Before anything, let us see what “products” means for SIM, as terms are very important to avoid misunderstanding when working under stress. Here are the definitions of product parameters:

Field	Format	Description
ID	Integer	Identifier. Each product has a unique identifier given automatically by the database system and It cannot be changed. In normal circumstances, you never need to change it. Usually, it is given in chronological order.
Family	String	To facilitate sorting, each product can have a family name associated. There are no pre-defined rules about how to choose a family name. No specific processing is done on the family names as the application uses ID and references.
Reference	String	Each product has one reference, each reference corresponds to only one product. This reference can be the bar code value or any unique string. Choosing a good reference naming system is the key of user comfort and system reliability.
Designation	String	This field is not used (except for search requests) by the system and may be used so that non-specialist users can clarify a reference by details like aspect or user warnings.
Supplier	String	The supplier name is taken from the supplier table which is detailed in a different tab. You don't need to use this field.
Quantity	Decimal	The number of actual products of the same reference in stock. This number can be anything, even a negative value as it is your responsibility to check if it matches with the actual stock.
Mini	Decimal	This is the minimum quantity you want to keep in stock at any time. When the real quantity is lower, the quantity will appear in red, as for ID 14 in the samples screen. Mini is specified when creating a new product.

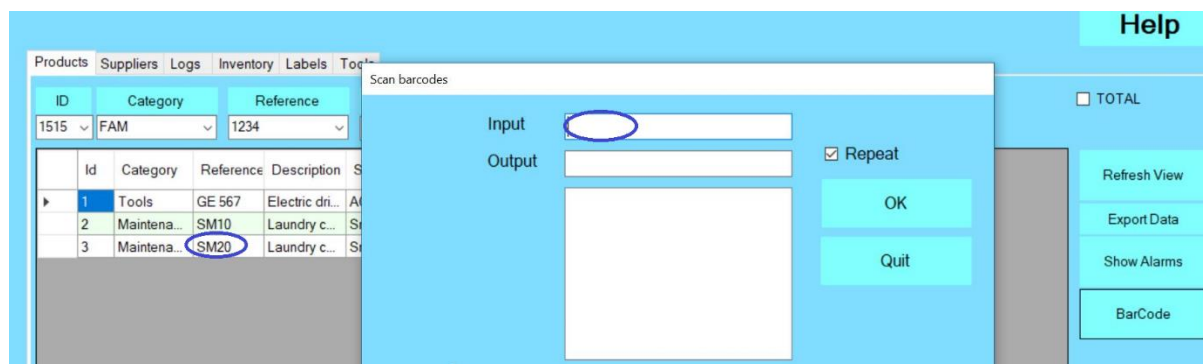
Location	String	This field is not used by the system, you can write anything that will help users find or sort products. Location is specified when creating a new product.
U-Buy	Decimal	This field contains the unitary cost of the product, when added to stock. Buying costs in SIM is not required. You can also use the CUMP feature to make use of the average value of the actual stock.
T-Buy	Decimal	This is the product of U-Buy by Quantity for a specified product.
U-Sell	Decimal	This field contains the unitary price of the product. Buying costs in SIM is not required. You can also use the CUMP feature to make use of the average value of the actual stock.
T-Sell	Decimal	This is the product of U-Sell and Quantity for a specified product.

## 4 Barcode window

### 4.1 Principle

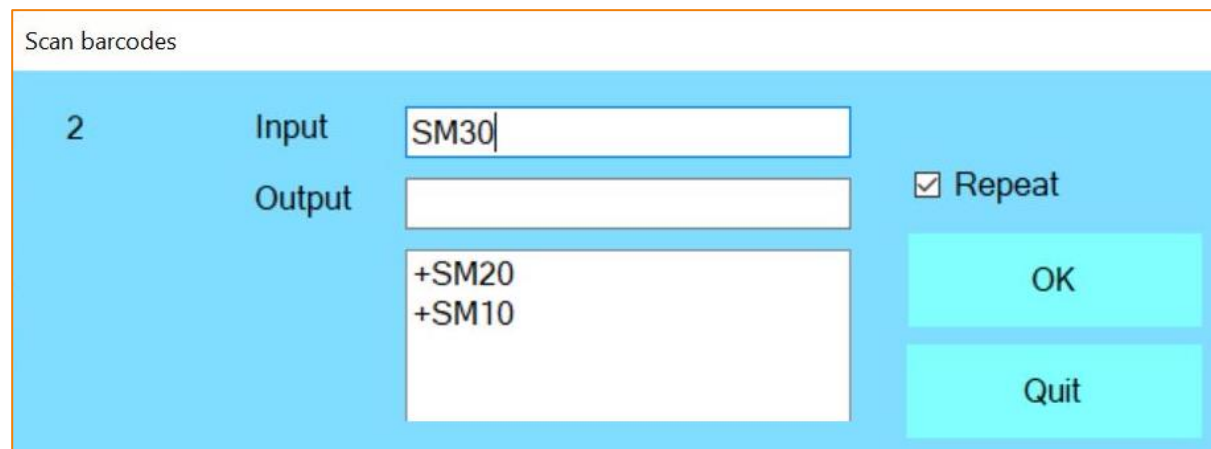
From the Product tab, when you have the barcode reading option, you can press the **Barcode** button. It opens a window adapted to USB barcode scanning, or any radio or Bluetooth compatible reader. Simple barcode readers that behaves like keyboard extensions are called HID (Human Interface Device).

You have to move the mouse cursor to the Input or Output textbox.



When you scan a barcode, the text is entered just like typing manually. A return character has to be sent by the reader, otherwise you have to use the OK button.

### 4.2 Scan modes



Each barcode scanned is displayed in the bottom window. Inputs are marked + and output –

The number of scans is indicated on the left.

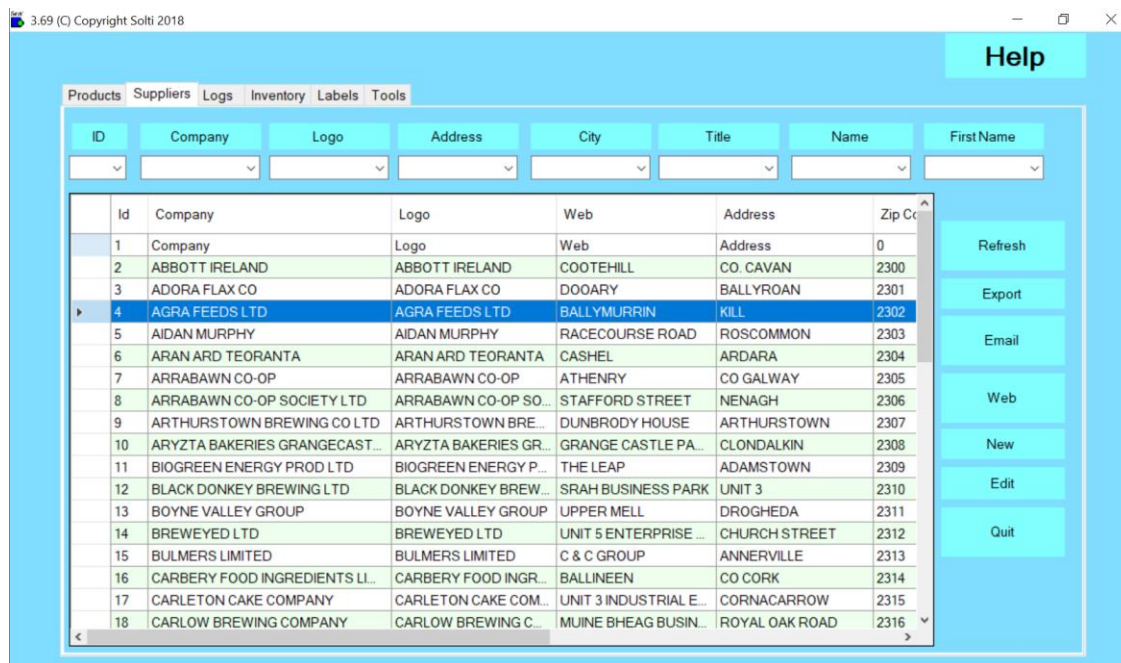
When the repeat checkbox is unchecked, you have the opportunity to enter a quantity, a comment or any additional information.

When the barcode is not already defined in your SIM as a reference, you can choose to create a new product or to ignore it.

## 5 Suppliers

### 5.1 Display

The suppliers tab is used to keep track of supplier's information, for user comfort.



### 5.2 Suppliers tab buttons

Button	Action
Help	Opens a web browser on SIM web pages.
Refresh	Restores data from database in the original form, after sorting data or to make sure that a networked base is updated.
Clear	Deletes all suppliers from the database.
Import	Imports data from an Excel .csv file
Export	Sends displayed data to an Excel file
New	Creates a new supplier
Modif	Edits the selected line
Quit	Exits application

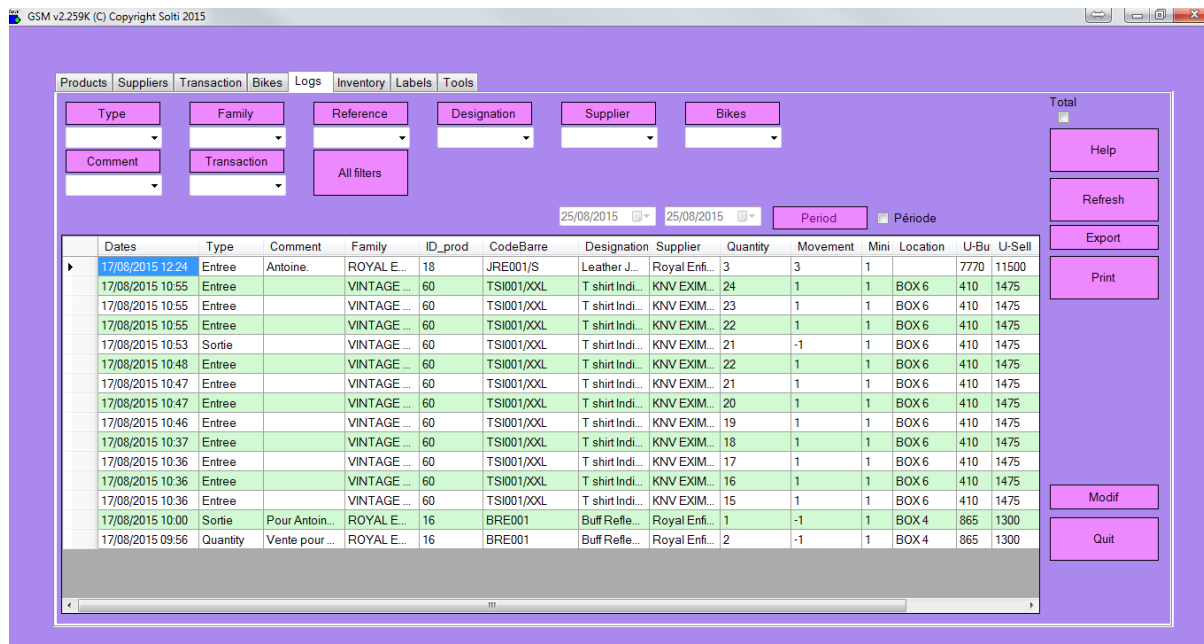
### 5.3 Supplier definition

Field	Format	Description
ID	Integer	Identifier. Each product has a unique identifier given automatically by the database system and cannot be changed. Normally, you don't have to change it. Usually, Identifiers are given in chronological order.
Company	String	The full name of the company
Logo	String	The short usual name, if any
Address	String	To send letters and return material
Zip	Integer	Zip code
City	String	Location
Name	String	Name of your main contact
First Name	String	First name of your main contact
Job	String	Main contact's function
Mail1	String	Main contact's mail
Mail2	String	Secondary mail
Fax	String	Fax

## 6 Logs tab

### 6.1 Display

The logs tab is used to keep track of any changes performed on the stock.



Dates	Type	Comment	Family	ID_prod	CodeBarre	Designation	Supplier	Quantity	Movement	Mini	Location	U-Bu	U-Sell
17/08/2015 12:24	Entree	Antoine.	ROYAL E...	18	JRE001/S	Leather J...	Royal Enf...	3	3	1		7770	11500
17/08/2015 10:55	Entree		VINTAGE ...	60	TSI001/XXL	T shirt Indi...	KNV EXIM...	24	1	1	BOX 6	410	1475
17/08/2015 10:55	Entree		VINTAGE ...	60	TSI001/XXL	T shirt Indi...	KNV EXIM...	23	1	1	BOX 6	410	1475
17/08/2015 10:55	Entree		VINTAGE ...	60	TSI001/XXL	T shirt Indi...	KNV EXIM...	22	1	1	BOX 6	410	1475
17/08/2015 10:53	Sortie		VINTAGE ...	60	TSI001/XXL	T shirt Indi...	KNV EXIM...	21	-1	1	BOX 6	410	1475
17/08/2015 10:48	Entree		VINTAGE ...	60	TSI001/XXL	T shirt Indi...	KNV EXIM...	22	1	1	BOX 6	410	1475
17/08/2015 10:47	Entree		VINTAGE ...	60	TSI001/XXL	T shirt Indi...	KNV EXIM...	21	1	1	BOX 6	410	1475
17/08/2015 10:47	Entree		VINTAGE ...	60	TSI001/XXL	T shirt Indi...	KNV EXIM...	20	1	1	BOX 6	410	1475
17/08/2015 10:46	Entree		VINTAGE ...	60	TSI001/XXL	T shirt Indi...	KNV EXIM...	19	1	1	BOX 6	410	1475
17/08/2015 10:37	Entree		VINTAGE ...	60	TSI001/XXL	T shirt Indi...	KNV EXIM...	18	1	1	BOX 6	410	1475
17/08/2015 10:36	Entree		VINTAGE ...	60	TSI001/XXL	T shirt Indi...	KNV EXIM...	17	1	1	BOX 6	410	1475
17/08/2015 10:36	Entree		VINTAGE ...	60	TSI001/XXL	T shirt Indi...	KNV EXIM...	16	1	1	BOX 6	410	1475
17/08/2015 10:36	Entree		VINTAGE ...	60	TSI001/XXL	T shirt Indi...	KNV EXIM...	15	1	1	BOX 6	410	1475
17/08/2015 10:00	Sortie	Pour Antoin...	ROYAL E...	16	BRE001	Buff Refle...	Royal Enf...	1	-1	1	BOX 4	865	1300
17/08/2015 09:56	Quantity	Vente pour ...	ROYAL E...	16	BRE001	Buff Refle...	Royal Enf...	2	-1	1	BOX 4	865	1300

### 6.2 Log tab buttons

Button	Action
Help	Opens a web browser on SIM web pages.
Refresh	Restore data from database in the original form, after sorting data or to make sure that a networked base is updated.
Clear	Deletes all logs from database, after user confirmation.
Export	Sends displayed data to an Excel file
Modif	Edits the selected line
Quit	Exits application



### 6.3 Log definition

We call 'movement' an operation moving data into or out of stock. All movements are stored (logged and) in the journal. Operations such as modifying and deleting an item are also stored.

Field	Format	Description
ID	Integer	Identifier. Each product has a unique identifier given automatically by the database system. It cannot be changed. Normally you don't have to change it. Usually, identifiers given in chronological order.
Dates	String	Date and time of the operation
Type	String	Before = quantity before movement After = quantity after movement Input = products added to stock Output = products taken out of stock Modif = modification of product details
Comment	String	Comment eventually entered relating to the action
Family	Integer	Product family
ID_prod	Integer	Product ID
Reference	String	Product reference
Designation	String	Product designation
Supplier	String	Product supplier
Quantity	Decimal	Product quantity in stock
Movement	Decimal	Quantity moved
Mini	Decimal	Product minimum
Location	String	Location
U-buy	Decimal	Unitary buying price
U-sell	Decimal	Unitary selling price

## 7 Label printer tab

### 7.1 Display

This tab is used only to design your own custom labels. It is for skilled users only.



### 7.2 Log tab buttons

Button	Action
Select	Opens the list of printers to use
Configuration	Opens the parameter file which contains a [ETIQUETTE] section that may need to be modified. Call us for more details.
Try	Prints one label
Print	Sends the specified number of labels to the printer
Create list	Generates a CSV file containing the text of the labels for all products
Print list	Prints the list from the previous file. The file can be modified as required.
Quit	Exits application

## 7.3 Simple label settings

This chapter describes the setting for one label.



In this sample, we use EAN code. The label is made of 3 lines, from the top to the bottom. The text which appears under the barcode, it is the barcode value.

### In Etiquette.ini we have the following parameters:

```
[DATA]
NOMBRE=5           // Number of labels to print
TITRE=My Company   // Title for all labels

[ETIQUETTE]
CODE128=0           // Using code128
CODEEAN=8           // Using code EAN
HAUTEUR=20          // Height of barcode drawing
LARGEUR=60          // Width of barcode drawing
OFFSETX=10          // Horizontal shift for all printing
OFFSETY=10          // Vertical shift for all printing
X1=0                // Horizontal position the first line
Y1=0                // Vertical position of the first line
F1=12               // Height of the font of the first line
L1=20               // Maximum character length of the first line
X2=1                // Second line X
Y2=8                // Second line Y
F2=8B               // Second line height, 8 pixels, bold font
L2=20               // Second line length
X3=0                // Line 3 = Barcode drawing position
Y3=16               // Line 3 position
X4=0                // Line 4 position, if any
Y4=16               // Line 4 position
ZOOM=5              // Optional parameter to use for fixed scale barcodes
```

Unit is usually half millimeter. It depends of your printer. There is an unlimited number of possibilities. You can always send us a drawing for the label you want.

Here is an example of ROTATION=1 effect



## 7.4 Multiple label printing

When using a classical A5 or A4 printer, you need adhesive paper and to use the **generate list** and **print list** buttons.

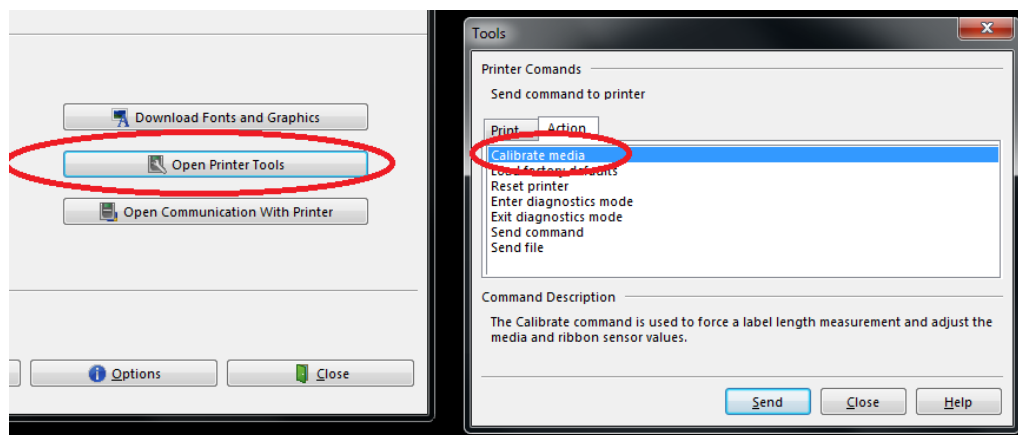
```
[ETIQUETTE]
PAS_HORIZONTAL=100      // Horizontal distance between two labels
PAS_VERTICAL=50         // Vertical distance between two labels
NB_HORIZONTAL=4         // Number of labels in a row
NB_VERTICAL=8           // Number of labels in a column
```

If you want to print a list with a single label printer, use the following setting:

```
[ETIQUETTE]
NB_HORIZONTAL=1
NB_VERTICAL=1
```

## 7.5 Zebra printers

Zebra printers are the best, but the installation software may not look familiar. By default, the EPL driver is installed and you have to go to the printer setting panel in your window to select the advanced settings and change the driver to the non EPL driver. Sometimes, to adjust the setting of the printer you have to install the Zebra printer utility.



The calibrate media function is very powerful. If it does not work, please ask Zebra for support.

## 7.6 Code 128 labels

The most powerful barcode coding is CODE128. It enables letters, uppercases and low cases, as well as many symbols. A lot of formats are already integrated into SIM.

### Pre-defined SIM labels formats

You can select one of these formats with the parameter CODE128=XXX



This is the list in May 2016. Please ask for specific labels.

## 8 Inventory tab

### 8.1 Display

The inventory tab is independent of the usual stock management. It is dedicated to inventory operation, performed on specific occasions to check if the theoretical stock, in the products tab, really matches with what can be seen in the warehouse. In order to check, this specific tab enables the following operations:

- To fill a list of products with theoretical quantities
- To enable the user to add actual quantities
- To display differences
- To update stock panel only for quantities that have been checked
- Quantities that have not been checked remain unchanged in the product tab

GSM v2.259K (C) Copyright Solti 2015

Products Suppliers Transaction Bikes Logs Inventory Labels Tools							
Family		Reference	Designation	Location	Quantity	Real	Diff
1	ROYAL ENFIELD	TSM002/S	T Shirt Made Like A Gun Gr...	BOX 4		2	-1
2	ROYAL ENFIELD	TSM002/M	T Shirt Made Like A Gun Gr...	BOX 4		0	-1
3	ROYAL ENFIELD	TSM002/L	T Shirt Made Like A Gun Gr...	BOX 4		6	-1
4	ROYAL ENFIELD	TSM002/XL	T Shirt Made Like A Gun Gr...	BOX 4		0	-1
5	ROYAL ENFIELD	TSM002/XXL	T Shirt Made Like A Gun Gr...	BOX 4		0	-1
6	ROYAL ENFIELD	TSM001/S	T Shirt Made Like A Gun BL...	BOX 4		2	2 0
7	ROYAL ENFIELD	TSM001/M	T Shirt Made Like A Gun BL...	BOX 4		0	-1
8	ROYAL ENFIELD	TSM001/L	T Shirt Made Like A Gun BL...	BOX 4		0	-1
9	ROYAL ENFIELD	TSM001/XL	T Shirt Made Like A Gun BL...	BOX 4		2	3 1
10	ROYAL ENFIELD	TSM001/XXL	T Shirt Made Like A Gun BL...	BOX 4		0	2 2
11	ROYAL ENFIELD	PRE001/S	Polo Enfield White MLG	BOX 4		0	4 4
12	ROYAL ENFIELD	PRE001/M	Polo Enfield White MLG	BOX 4		18	0 -18
13	ROYAL ENFIELD	PRE002/L	Polo Enfield White RE	BOX 4		0	0 0
14	ROYAL ENFIELD	PRE001/XL	Polo Enfield White MLG	BOX 4		0	4 4
15	ROYAL ENFIELD	PRE001/XXL	Polo Enfield White MLG	BOX 4		0	5 5
16	ROYAL ENFIELD	BRE001	Buff Reflective	BOX 4		1	0 1
17	ROYAL ENFIELD	BRE002	Buff Original	BOX 4		3	-1
18	ROYAL ENFIELD	JRE001/S	Leather Jacket RE			3	-1
19	ROYAL ENFIELD	JRE001/M	Leather Jacket RE	BOX 3		2	-1
20	ROYAL ENFIELD	JRE001/L	Leather Jacket RE	BOX 3		1	-1
21	ROYAL ENFIELD	JRE001/XL	Leather Jacket RE	BOX 3		1	-1
22	ROYAL ENFIELD	JRE001/XXL	Leather Jacket RE	BOX 3		0	-1

Help Refresh New Export Clear Save Quit

### 8.2 Inventory definition

In the inventory list, some information concerning all the products of the stock tab is duplicated, completed by two columns specific to inventory.

Field	Format	Description
ID	Integer	Product identifier
Quantity	Decimal	Theoretical quantity in stock, from product tab
Real	Decimal	Actual quantity checked by user
Difference	Decimal	Automatically updated difference. Appears in red if actual stock is lower than theoretical, yellow if actual is higher and not colored if equal.

### 8.3 Inventory tab buttons

Button	Action
Help	Opens the web browser on SIM web pages.
Refresh	Restores data from the database in the original form, after sorting data or to make sure that a networked base is updated.
Clear	Deletes all inventory data.
Export	Sends displayed data to an Excel file
Save	Updates stock quantities according to user's actual quantities
Save	Updates stock according to user's real/actual quantities
New	Initializes the inventory product list from stock's information. Makes sure previous data have been saved.
Quit	Exits application

## 9 Tools tab

---

### 9.1 Display

The tool tab is separated into two sub-tabs. Depending on your chosen options, you can have more sub-tabs and more buttons in each sub-tab. Here we will describe the basics.

### 9.2 Tools Configuration tab

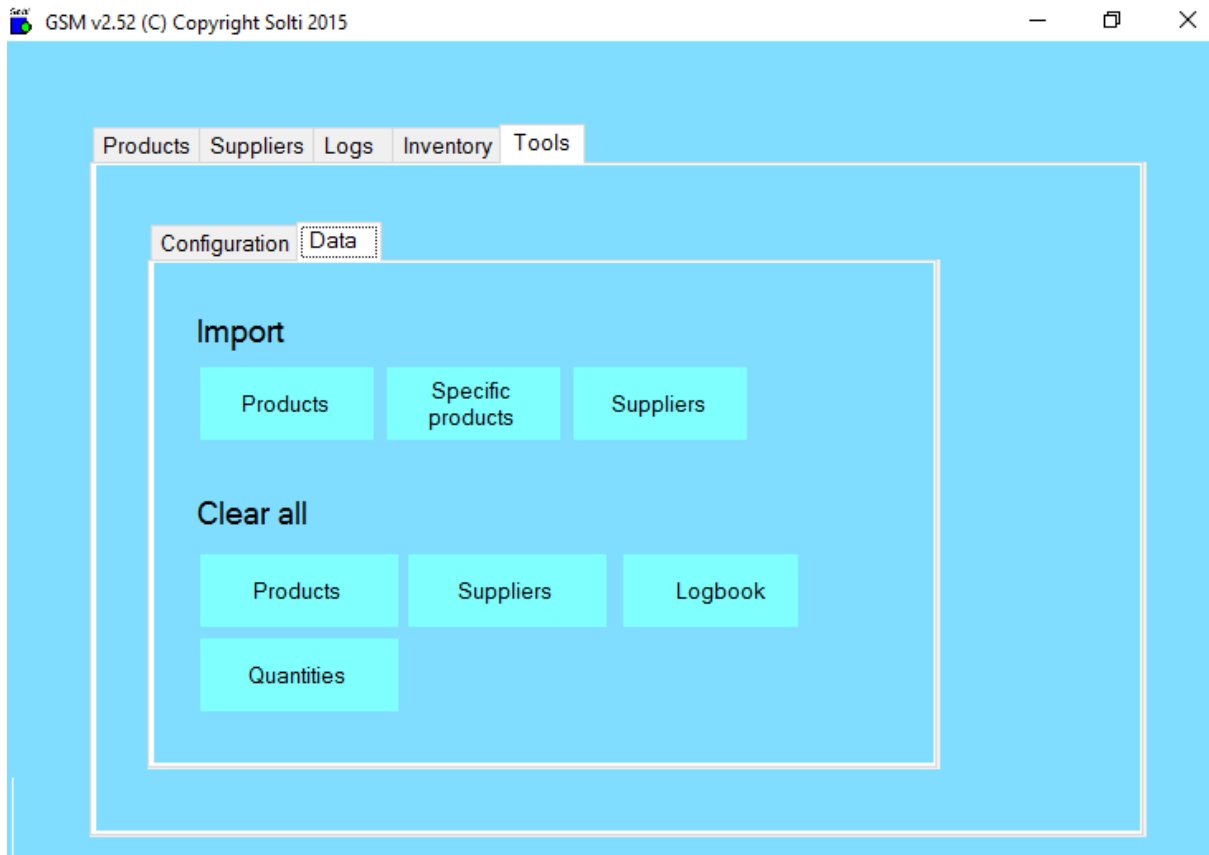


### 9.3 Configuration tab buttons

Button	Action
Edit	Opens a text file GSM.ini containing all parameters using the good old FILE.INI windows format. Parameters are grouped into [SECTIONS]. There is one parameter name and one value per line.
Restart	Restarts the application after a parameter change.
Clear	Deletes all inventory data, after user confirmation.
Files	Opens a file browser window to SIM folder.
Colors	You can change the color of SIM windows and SIM buttons.



## 9.4 Tools Data tab



## 9.5 Data tab buttons

Button	Action
<b>Import</b>	
Products	Lets you select a CSV file (text with columns separators) to import product data, according to SIM export format.
Specific Products	Lets you select a CSV files to import product data, under any format as explained hereafter.
Suppliers	Lets you select a CSV file containing the supplier's description.
<b>Clear all</b>	
Products	Removes all product descriptions and quantities in the database. <b>Dangerous!</b>
Suppliers	Removes all suppliers from database.
Logbook	Removes all logs from database.
Quantities	Sets all product quantities to zero. <b>Dangerous!</b>

Here is the explanation for **Specific Products Import**:

The screenshot shows the 'ImportForm' window with the following components:

- Source columns:** A list of columns from the source file. '05. Nom du produit' is selected with a single click.
- Destination columns:** A list of columns in the SIM system. '04. Designation' is selected with a double click.
- Matching:** A text area showing the mapping rule: '02.Famille=01.Groupe' and '05.Fournisseur=02.Fournisseur'.
- File separator options:** Radio buttons for 'Semi-columns' (selected), 'Comma', and 'Tabulation'.
- Buttons:** 'File' (to open a file), 'New format' (to create a new format), 'Import' (to execute the import), and 'Close'.
- Instructions at the bottom:**
  - Under Source columns: 'One click'
  - Under Destination columns: 'Double click'
  - Under Matching: 'New format to clear'

1. Select the type of your file separator: Semicolon, Comma or Tab.
2. Open your file with the 'File' button
3. Column headers of your file are displayed next to the SIM columns. For example, as you can see on the image above, by clicking once on the name of the product in the source column on the left and then clicking twice on designation in the destination column, you can define how data will be copied. Here the SIM designation column will take the Group column values of your file. Do this for all columns that are requested by SIM. You do not necessary need to use all columns.
4. Press the Import button.

When you return to this screen, SIM will offer to re-use the latest format. In order to delete a line of the format, you must double-click on it.

**CAUTION:** Importing prices does not work if your columns contain \$ or another currency sign. We need the original cells to be in "number" format.

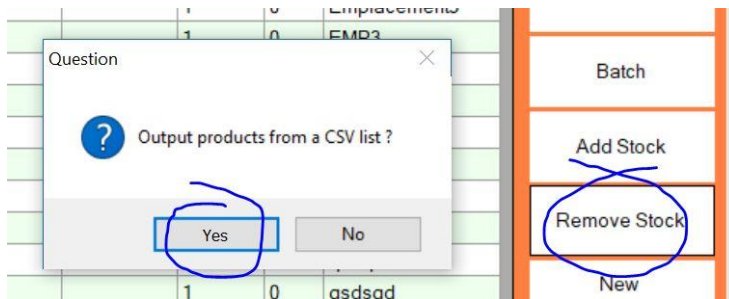
## 10 SIM Options

SIM is the best application to start professional inventory management. The basic version is made as simple as possible to get started easily. After a while, you may like to improve efficiency and add new features. Only some of the options are described here. Almost anything is possible with SIM: just ask.

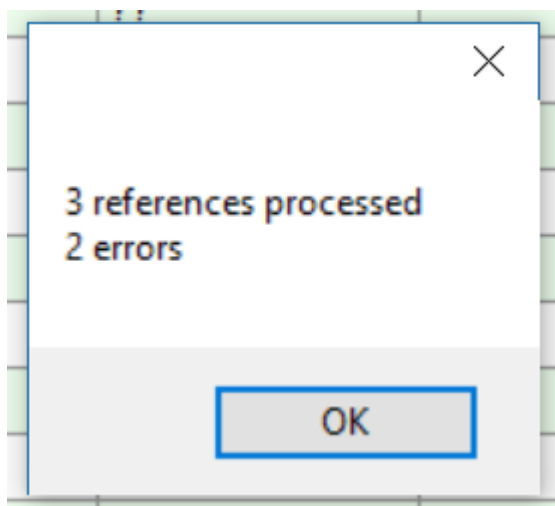
### 10.1 Using a list of products to remove

There is a parameter to add to your TOOLS/CONFIG/EDIT file that you have to “buy” from us.

Then the behavior of the REMOVE PRODUCT button will change as follow:



Answer YES and select any .CSV file from your disk containing REFERENCE,QUANTITY lines



A window will display the result of the operation. You can view the logbook to check the list of products.

## 11 How to do

---

### 11.1 Switching from the free to licensed version

The SIM license allows you to go beyond 40 products. When the software asks for a license code, just enter it. The software asks you to restart it, and at the next launch, you have the licensed software. To obtain a license number before the limit of 40, simply send us the serial number displayed with the HELP button. In any case you will not lose your data.

If the PC on which you wish to exploit the license is not the same, please preserve the GSM.mdb (database) file which contains your data, compatible with all versions of SIM.

### 11.2 Import data

You have just installed SIM, you wish to enter your data.

Even if you do not have a complete Excel file, but inventory of your stock has never been formalized, you will save time and be comfortable by following these steps:

1. In the PRODUCTS tab use the EXPORT button to get a CSV file
2. In this file, manually add or copy and paste your data
3. In the TOOLS / DATA tab, use the DELETE PRODUCTS button
4. On the TOOLS / DATA tab, use the IMPORT PRODUCTS button to embed your CSV file

The products are identified in the order of the CSV file. If you have difficulties, start with the exported CSV file without changing anything ... If the difficulties persist, send us your file. You get a CSV file in Excel by doing "Save As" ".CSV Separator Semicolon". Caution: Some Excel configurations use the tab or comma as a separator. Just beware and open the file with Notepad / BlocNote to remove ambiguities.

### 11.3 Add an option to SIM

The addition of an option to SIM is usually done by a simple setting that we will do with you. In some cases, the data format will be changed (tables or columns in addition). It will be necessary to carry out a data export, a modification of the file and an import. If you notice errors during an operation, it is probably because the format of the log has also changed, you will have to purge it in the TOOLS / DATA menu.

## 11.4 Networking

SIM is a Microsoft .Net application, and as such it can be deployed on virtually any type of infrastructure. Thus, multi-user operation is possible in all situations.

## 11.5 Intranet

If you have a Windows share (Private or Public Group), you must move the SIM folder, containing all files and subfolders to a shared folder. Caution, you need the editing rights! Inside the same local network, the response times compared to an installation on your PC are negligible. They seem better in cable network than in WIFI. The operation is similar with NAS such as FreeBox Revolution.

## 11.6 Extranet

If you have VPN or a Windows server, install SIM on this server. The Remote Desktop application available on Windows, Apple and even mobile phone will allow you to work, without however benefiting from all the facilities of file copies.

If you do not have a specific infrastructure, you can install the DropBox application on each of your PCs and place the SIM folder on a DropBox shared folder. The operation is perfectly satisfying if all the stations are connected permanently. Offline work is possible, very reliable on a single workstation when the others are not working, with possible loss of modifications if two workstations are working offline: to avoid.

The operation is similar with OneDrive, which is installed as standard since Windows 8.

## 11.7 Remote base

SIM is a very powerful software and very ergonomic because it makes the best use of the technologies available on your PC. Unlike WEB solutions that are penalized by languages more suited to esthetics than ergonomics, and especially penalized by the connection speeds that sometimes make their use impossible because of the load times of each page. The advantage of WEB solutions is the consultation of data from smart phones.

To benefit from the advantages of a WEB database accessible by HTML pages, SIM allows the use of a remote MYSQL database. Just set your SIM as for example:

**[VARIOUS]**

**Connection1 = SERVER = 217182207237; DATABASE = GSM01; UID = Thomas; PASSWORD =; PORT = 3306**

SOLTI can offer turnkey packages and specific WEB developments to complement your mobile phone with Internet access.

## 12 Advanced features

---

Since SIM is an open application based on standards such as Microsoft .NET, Access, SQL, Excel, there are many possibilities for installing, using and customizing it to suit your requirements, your information system or your network. Please contact us for more information.

### 12.1 Parameters

SIM parameters are stored in the text file GSM.ini. All parameters are gathered under the [divers] section. You only get a detailed description of the parameters once you have purchased a full licensed version.

The only thing you need to know is that parameters are grouped into sections with names in brackets:

**[DIVERS]**

**[PRODUITS]**

Within every section, each line contains one parameter, along with its name and value.

**LICENCE1=23445**

If you buy a license, you may have to edit and modify this file; we will help and support if necessary.

----- End -----

Your contact:

Mail: [contact@simple-inventory-manager.com](mailto:contact@simple-inventory-manager.com)

Site: [www.simple-inventory-manager.com](http://www.simple-inventory-manager.com)