



REFLECTORTM 5

The Network Backup and Archive Manager

Quick Start Guide



Welcome

Thank you for your purchase of the StorageQuest Reflector™. This guide will give you the information you need to get your system up and running quickly.

What is Reflector?

Reflector Server Edition is the Network Backup & Archive Manager specifically designed to support the complete line of Rimage CD & DVD duplication hardware, expanding their functionality to now deliver automated, reliable, cost-effective backup and archive protection for Small and Medium Businesses (SMBs) and the distributed enterprise.

This unique combination of software and hardware enables businesses to utilize industry standard optical media for all of its backup and archiving requirements. Features like automated backup of servers and workstations, optimization of data recording to reduce the number of discs required for a job, seamless spanning of files which are larger than a single piece of media and the automatic printing of labels for all media, provide businesses with greater ease of management and higher availability of their data.

Reflector Client Pac is an additional license that can be installed once Reflector Server Edition has been purchased. The Client Pac is designed for users needing the power and functionality of the Server Edition at their desktops. Users can push data files to a Rimage server which is especially useful with applications such as video editing, digital imaging or any application where large amounts of data must be moved off primary storage to free up capacity for the next job. Multiple users, each with a copy of Reflector Client Pac, can share a single Rimage system that serves all the computers of a networked Windows Workgroup.

The Rimage disc publisher includes one or more drives for reading and writing optical discs, a printer to label the top surface of those discs, and a robotic mechanism to automatically feed blank discs from the recorder, then to the printer, and finally to an output stack.

With Reflector, you can quickly and easily specify which files you wish to write to CD or DVD, on a single or recurring basis for system backup. The Reflector software automatically creates multiple CDs or DVDs as necessary, with each disc clearly labeled.

You can also use the Reflector software to restore some or all of the files from a CD or DVD to your computer's hard disk.

System Requirements

To use the Reflector Backup & Archiving Manager for Rimage, you will require the Minimum System configuration:

- Windows 2000™ or Windows XP™
- 1.5Ghz Processor
- 256 MB System Memory
- Network Interface Connection
- CD/DVD Drive
- At least 10 GB Available Free Disk Space¹
- A supported Rimage Server (360i, 2000i, DiscLab, Protégé II, Amigo II AutoStar II)

¹ To use PowerStream mode, you will require approximately 5 GB of free space per DVD recorder in your system. For use of non-PowerStream mode, you will require as much free space as the largest set of data that you wish to record.

Installing and Activating the Software

To install the program, simply click on the SETUP.EXE program located on the installation CD. Follow the simple installation procedure and the software will be installed onto your computer.

You can install the Reflector on either the same computer as the Rimage hardware, or another computer on the same network.

The Reflector software must be activated within 14 days of installation by contacting StorageQuest at our activation web site:
www.StorageQuest.com/Activate

You will need to provide your Site Code and Serial Number to activate the software. The Site Code is accessible in the License Configuration screen (appears after 14-day expiry or by pressing Enter on Startup).

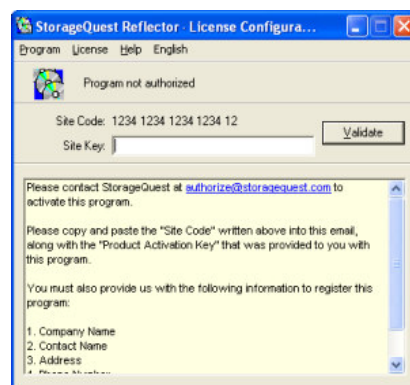


Figure 1: Getting the Site Code

The serial number is located inside your CD case.

Connecting to Rimage

Now that you have installed the software, start the Reflector software. You will first be asked to select your Rimage model of hardware.

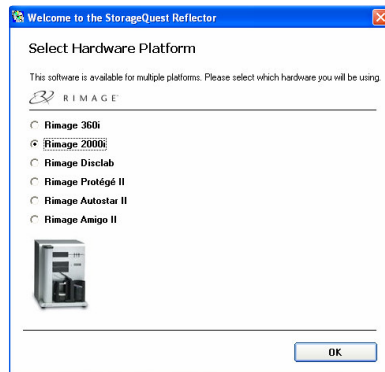


Figure 2: Select Hardware

A dialog box will appear asking if you want to set up the Rimage now.

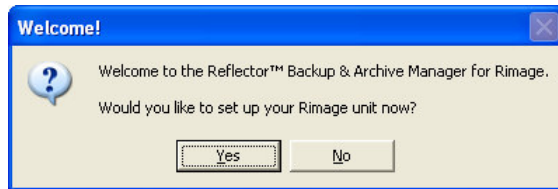


Figure 3: Welcome

Click yes to this dialog, and it will bring you to the Rimage Settings page.

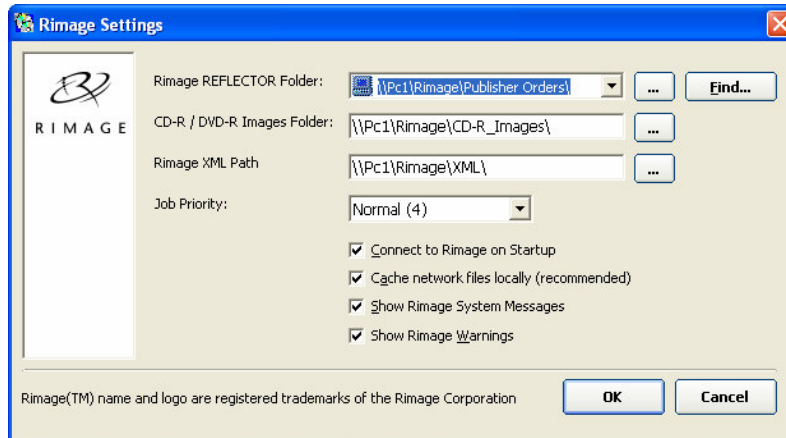


Figure 4: Rimage Settings

You can click the Find... button which will search the network for Rimage shares, if it finds a folder called "Rimage\Publisher Orders", it will use it as the Reflector folder and set the other folders to match it.

There are only three paths the Reflector needs to know in order to connect to the Rimage: a folder for Reflector to stage files prior to recording them, the location of the Rimage XML files and the location where you want to create your CD/DVD images.

If you are using the Reflector locally (on the same computer as the Rimage), then you can specify any folder on your computer where you want to store the data and images). If you are on a different computer, you will need to specify a network share that both your computer and the Rimage can access.

Check the Rimage Status page to ensure that you have connected successfully to your Rimage hardware.

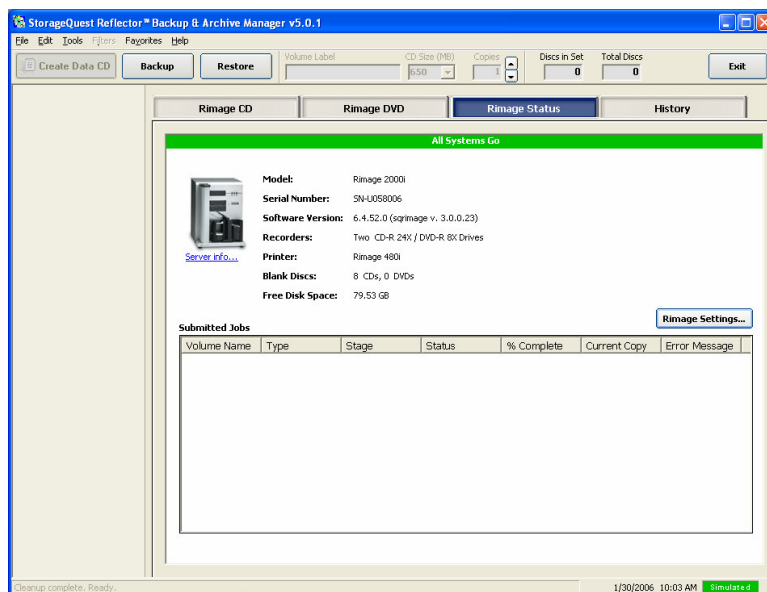


Figure 5: All Systems Go

How to Make a CD or DVD

To make a CD or DVD, select the mode of your choice (Rimage CD or Rimage DVD). Use the navigation pane on the left-hand side to select your source directory. Select the files and folders you wish to burn to your disc by double-clicking on the files and folders that you wish to add and they will be placed in the destination list. Then simply click the Create Data CD button. The software will automatically span as many discs as required to make your image.

Advanced Features

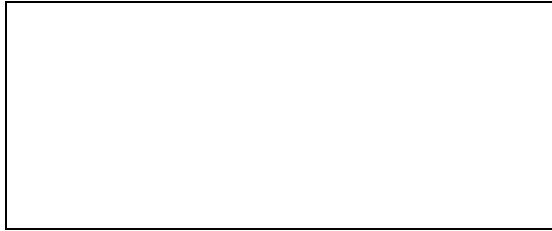
There are many advanced features of the Reflector, too many to cover in this simple installation guide. So don't be afraid to explore the menus and functions of the software as well as the complete User Manual on the installation disk. Some of the features you will discover are:

- Automatic spanning of files over CDs or DVDs
- Customizable label printing with automatic text
- Script recording and playback (can be integrated with 3rd-party software)
- Advanced file and directory filtering
- Full and Incremental Backup
- Scheduled tasks integration
- Restore from backup to the original location
- Full network support
- HTML index files
- Searchable history of written data
- Real and simulated writing and printing
- File spanning for individual files that are larger than the media
- Open file backup, Windows Registry backup
- Verify archive and delete original files with notice HTML
- much, much more!

Any Questions?

If you have any questions on installing or using the Reflector software, please first check the User Manual that is included on the CD also talk with your reseller or the company you purchase the Reflector software from and finally you can contact using the contact information below.

Reseller Contact Information



StorageQuest Contact Information

StorageQuest, Inc.
127 Walgreen Road
Ottawa, Ontario
K0A 1L0 CANADA
www.StorageQuest.com

support ticket system: www.StorageQuest.com
product activation: www.StorageQuest.com/Activate/
sales: sales@StorageQuest.com

phone: (613) 831 6919
fax: (613) 831 1785
sales: (888) 309 5216

Thank you for choosing StorageQuest Reflector™
The Network Backup and Archiving Manager

StorageQuest, Inc. © 2006 StorageQuest Inc. All rights reserved. Specifications are subject to change without notice. StorageQuest logos, REFLECTOR, are registered trademarks of StorageQuest Inc. in the U.S., Canada and other countries. Rimage™ and all other brands or products are trademarks or registered trademarks of their respective holders and should be treated as such.

REFLECTOR-QS-RIM-11